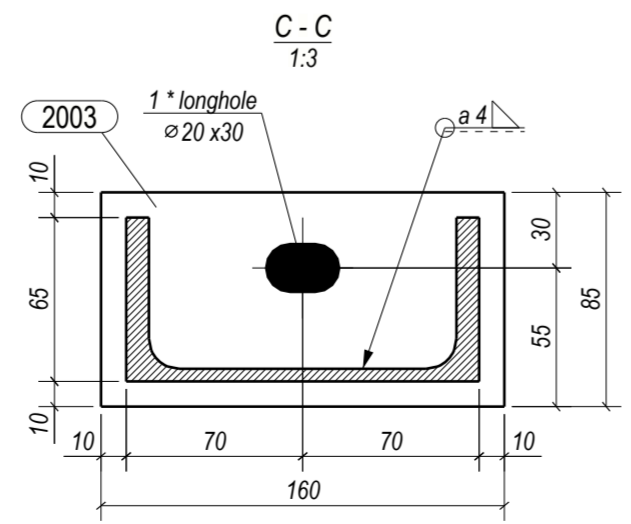
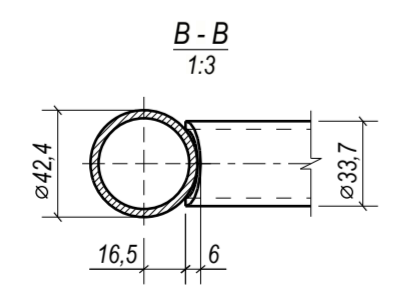
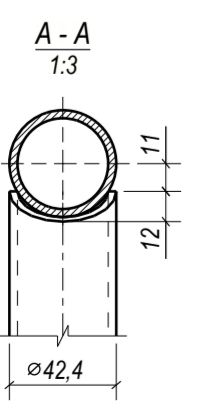
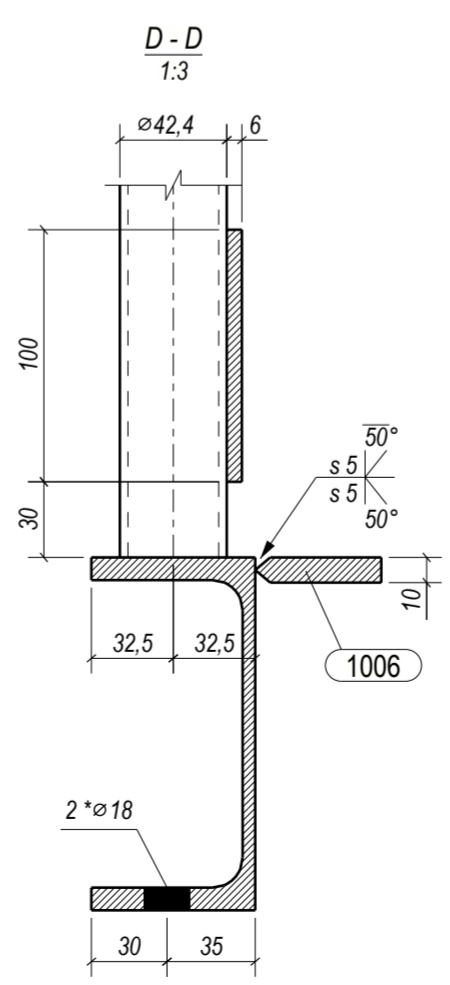
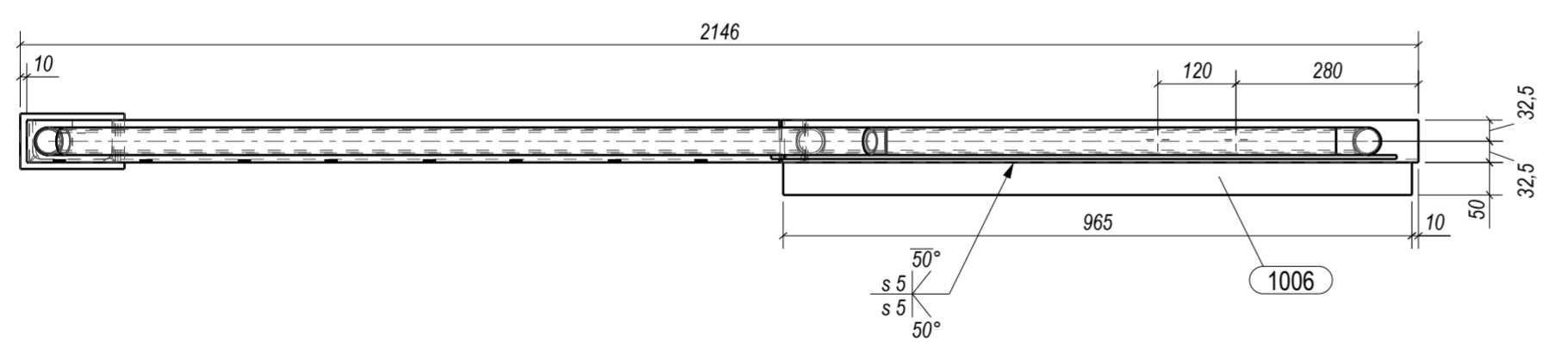
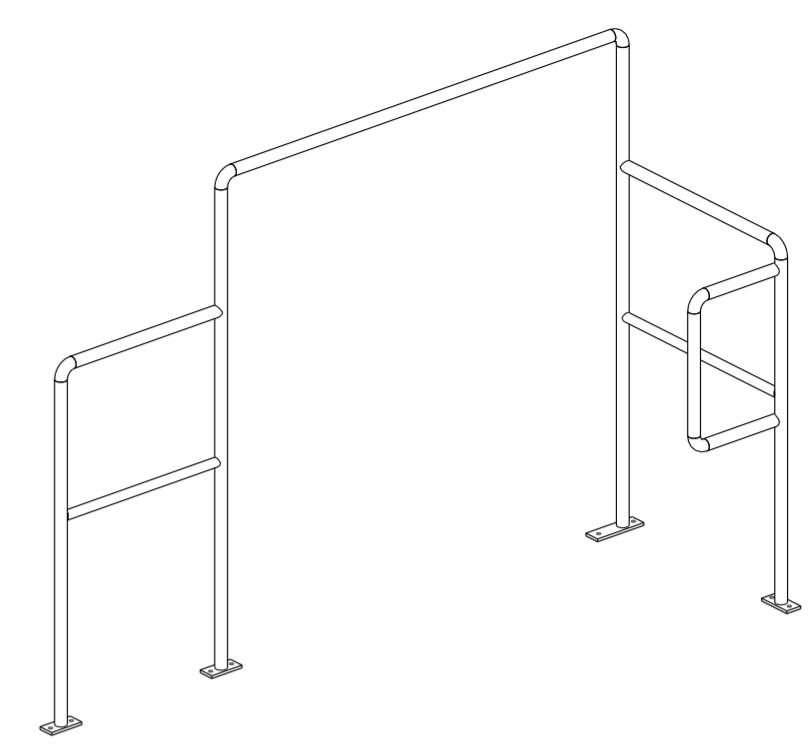
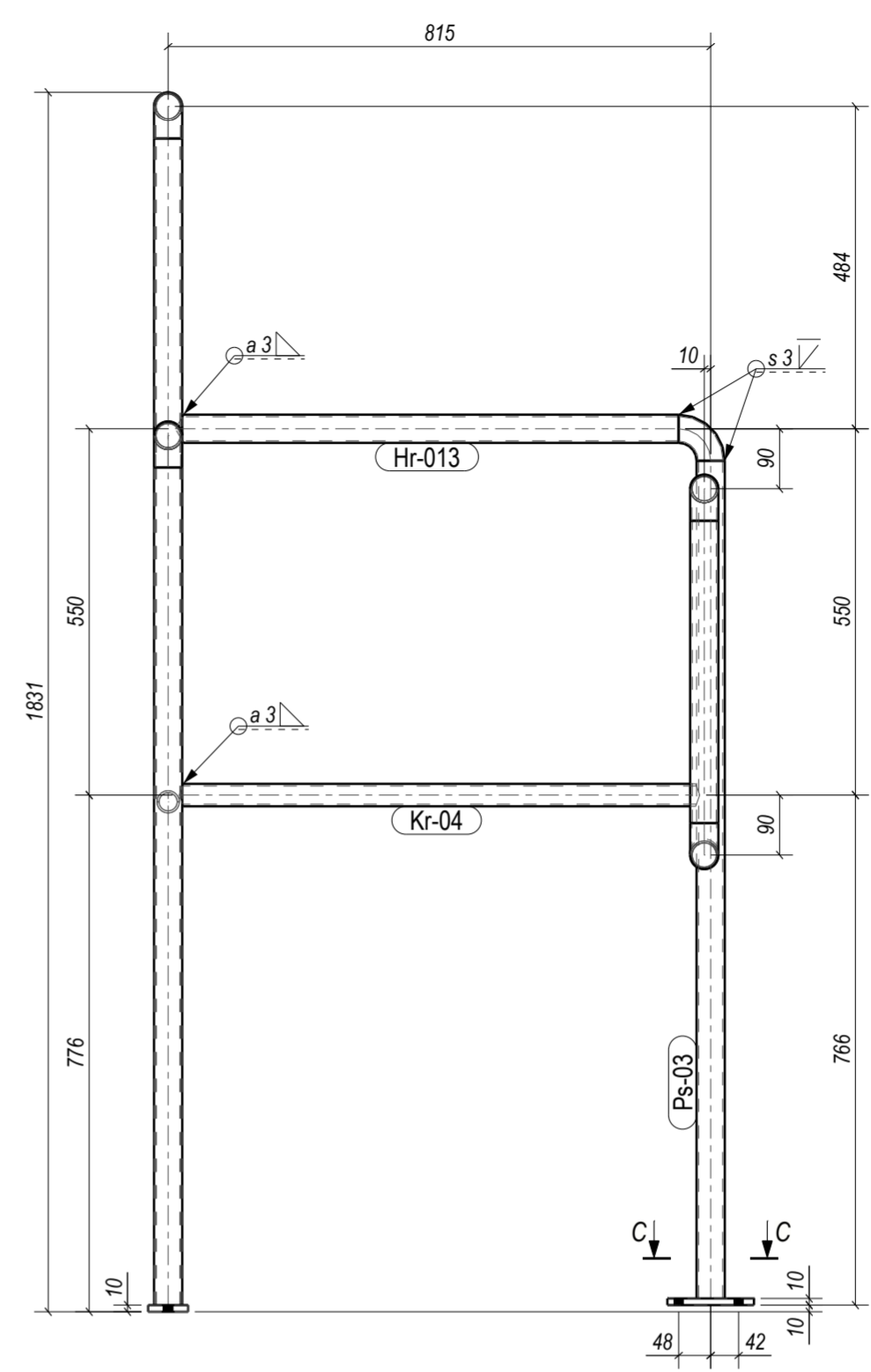
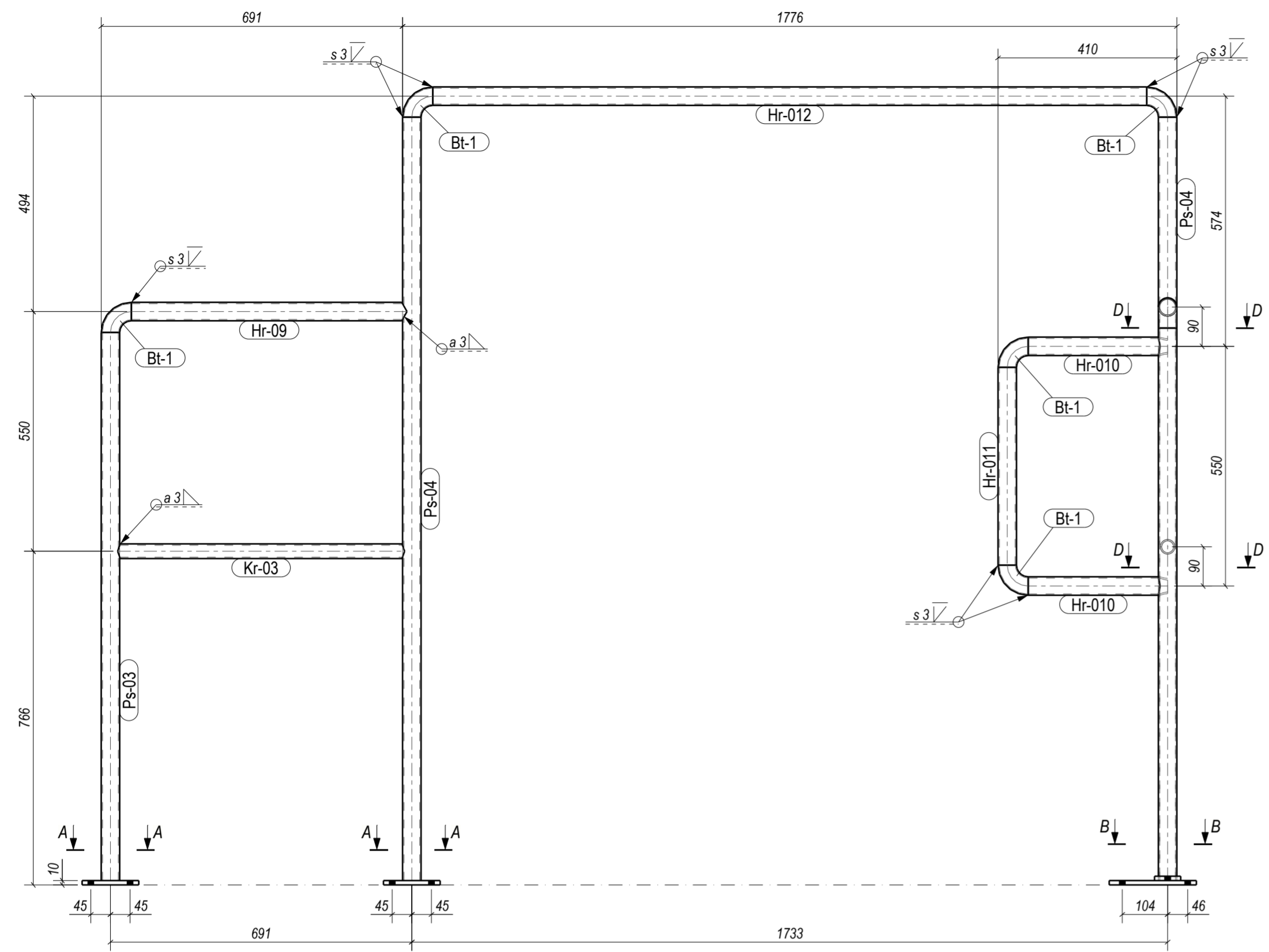


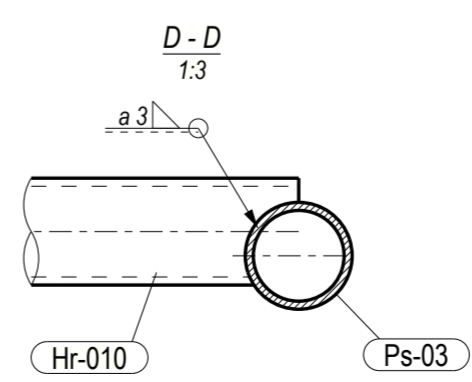
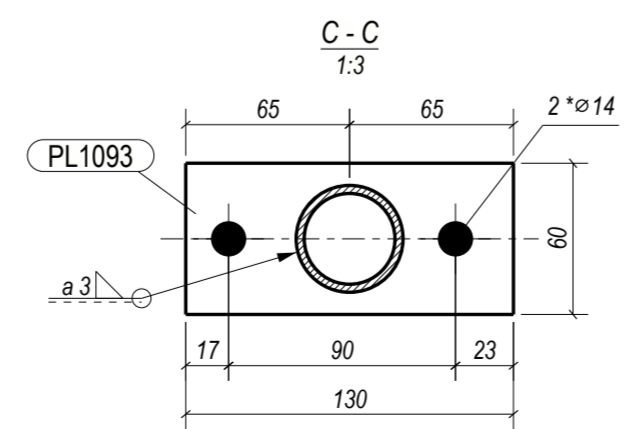
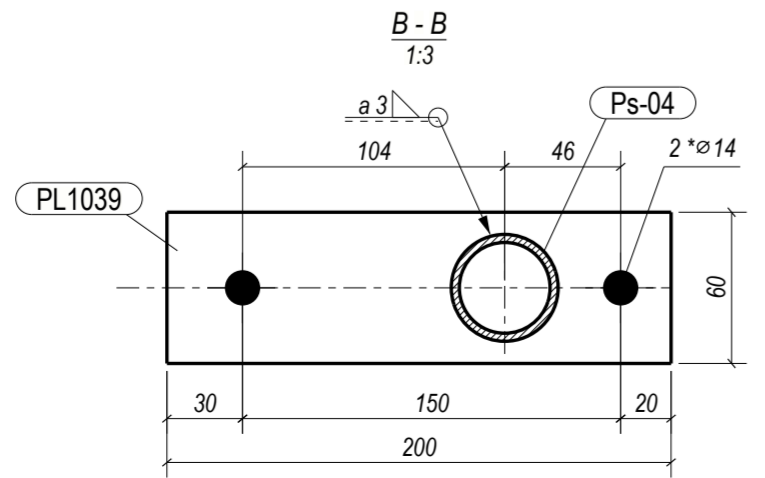
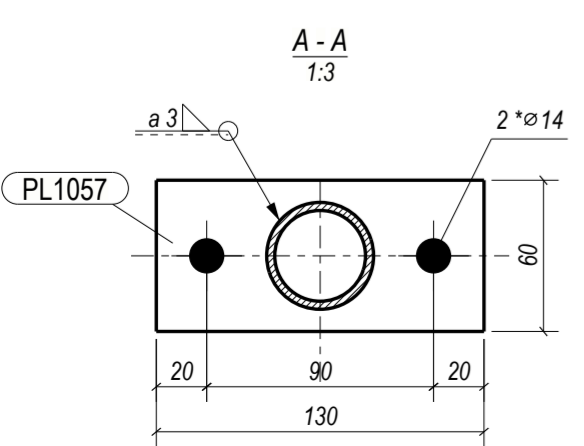
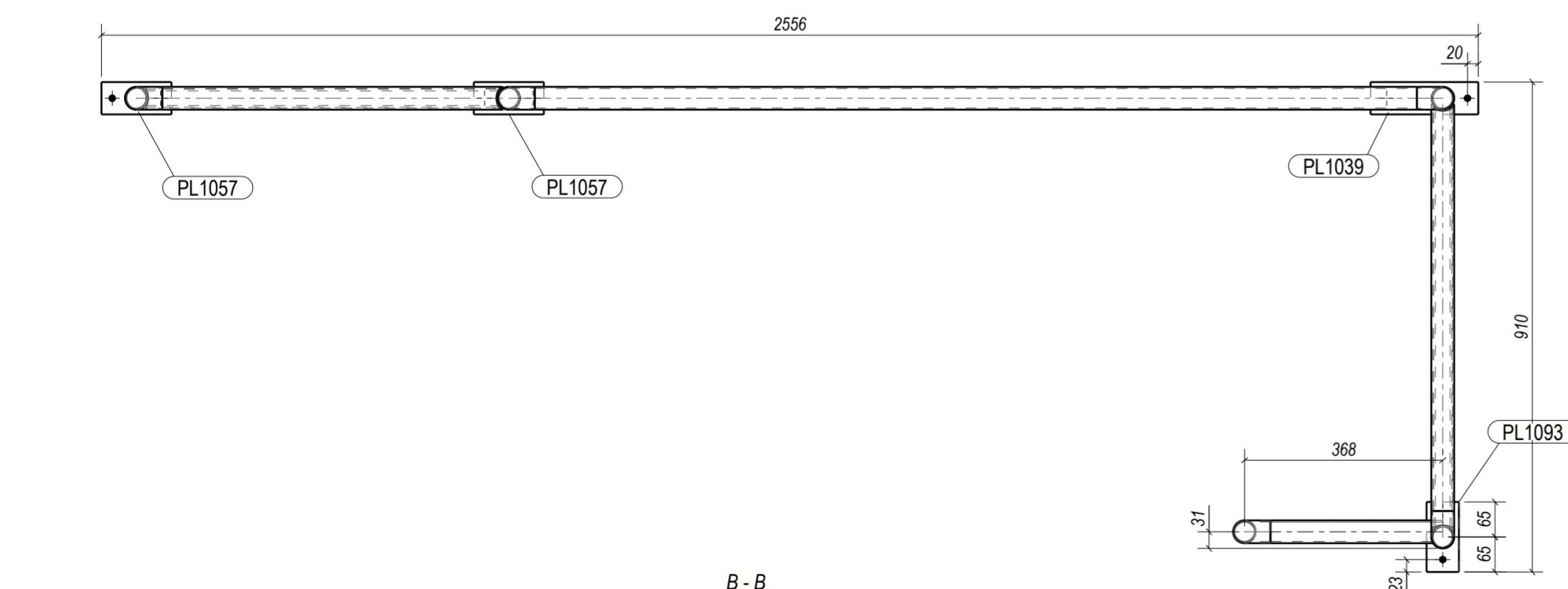
Technical requirements		
Execution class:	EXC2	EN 1090-2
Tolerance class:	1	EN 1090-2
Welding class:	C	EN ISO 5817
Thermal cutting class:	442	EN ISO 9013
Preparation grade:	P2	EN ISO 8501-3
Surface treatment:	Sa2.5	EN ISO 8501-1
Corrosion class:	C4	EN ISO1461
Colour:		



SPECIFICATION							
Part pos.	Qty.	Profile	Length, mm	Weight, kg	Weight total, kg	Steel	Note
1005	1	PL6*100	960	4.5	4.5	S235JR	
1006	1	PL10*50	965	3.6	3.6	S235JR	
2003	1	PL10*85	160	1.1	1.1	S355J2	
Bt-1	1	CFCHS42.4X2.6	75	0.2	0.2	S235	BR
Bt-5	1	CFCHS42.4X2.6	49	0.1	0.1	S235	
Bt-6	1	CFCHS42.4X2.6	26	0.1	0.1	S235	
Bt-7	1	CFCHS33.7X2.6	21	0.0	0.0	S235	
Hr-07	1	CHS42.4X3.2	1450	4.6	4.6	S355J2H	
Hr-08	1	CHS42.4X3.2	690	2.2	2.2	S355J2H	
Kr-05	1	CHS33.7X3.2	1338	3.3	3.3	S355J2H	
Kr-06	1	CHS33.7X3.2	94	0.2	0.2	S355J2H	
Kr-07	1	CHS33.7X3.2	724	1.8	1.8	S355J2H	
Ps-05	1	CHS42.4X3.2	1061	3.3	3.3	S355J2H	
Ps-06	1	CHS42.4X3.2	1033	3.3	3.3	S355J2H	
Ps-07	1	CHS42.4X3.2	1004	3.2	3.2	S355J2H	
St-01	1	UPE140	978	14.4	14.4	S355J2H	
St-02	1	UPE140	1351	19.9	19.9	S355J2H	
St-03	1	UPE140	118	1.7	1.7	S355J2H	
WELDS				1%	0.7		
TOTAL				68.1			
Object:						516.0E-V101	
Customer:						68.1 kg	
Drawn				STRINGER			
Designed							
Checked							
Approved							
						Stage	MKD
						Page	Pages
						1	1



Technical requirements		
Execution class:		EN 1090-2
Tolerance class:	1	EN 1090-2
Welding class:		EN ISO 5817
Thermal cutting class:	442	EN ISO 9013
Preparation grade:	P2	EN ISO 8501-3
Surface treatment:	Sa2.5	EN ISO 8501-1
Corrosion class:		
Colour:		



SPECIFICATION							
Part pos.	Qnt.	Profile	Length, mm	Weight, kg	Weight total, kg	Steel	Note
Bt-1	6	CFCHS42.4X2.6	75	0.2	1.2	S235	
Hr-09	1	CHS42.4X3.2	632	2.0	2.0	S355J2H	
Hr-010	2	CHS42.4X3.2	320	1.0	2.0	S355J2H	
Hr-011	1	CHS42.4X3.2	454	1.4	1.4	S355J2H	
Hr-012	1	CHS42.4X3.2	1637	5.2	5.2	S355J2H	
Hr-013	1	CHS42.4X3.2	756	2.4	2.4	S355J2H	
Kr-03	1	CHS33.7X3.2	658	1.6	1.6	S355J2H	
Kr-04	1	CHS33.7X3.2	782	1.9	1.9	S355J2H	
PL1039	1	PL10*60	200	1.0	1.0	S355J2+N	
PL1057	2	PL10*60	130	0.6	1.2	S355J2+N	
PL1093	1	PL10*60	130	0.6	0.6	S355J2+N	
Ps-03	2	CHS42.4X3.2	1258	4.0	7.9	S355J2H	
Ps-04	2	CHS42.4X3.2	1752	5.5	11.0	S355J2H	
WELDS				1%	0.4		
<b>TOTAL</b>					<b>39.9</b>		
Object:						579.01-R121	
Customer:						39.9 kg	
Drawn						Stage MKD	
Designed						Page Pages	
Checked						1 1	
Approved						Format: A2	