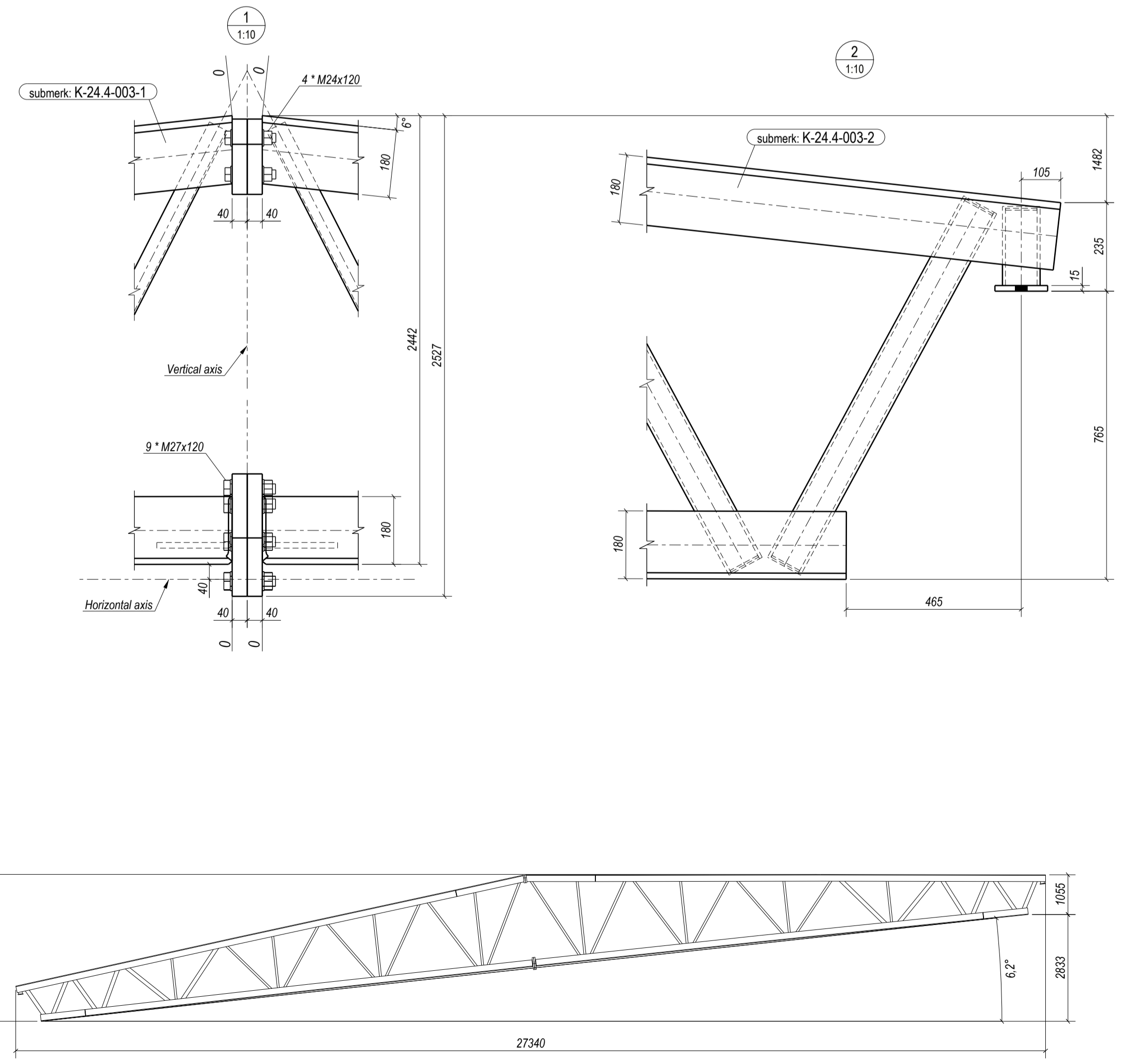
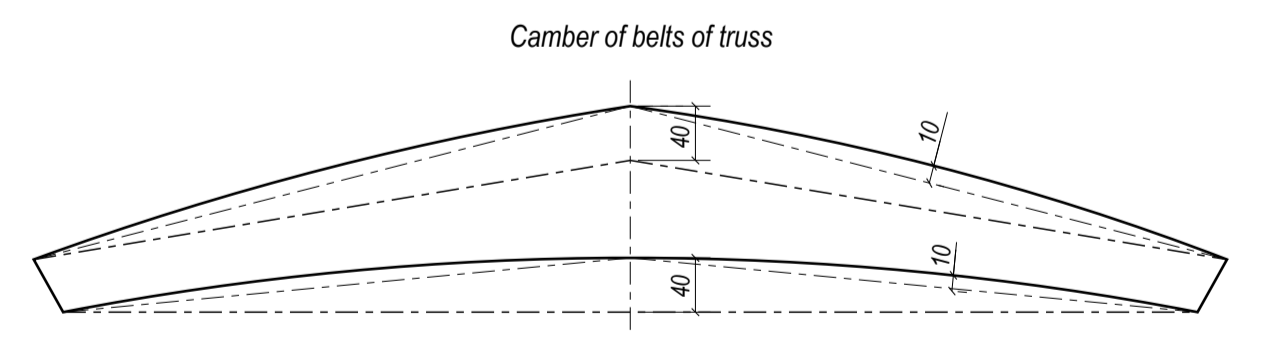


SPECIFICATION							
Part pos.	Qty.	Profile	Length, mm	Weight, kg	Weight total, kg	Steel	Note
D3-1	2	CFRHS100X100X8	1092	23.8	47.6	S355J2H	BR
D3-2	2	CFRHS100X100X8	1231	26.8	53.6	S355J2H	BR
D3-3	2	CFRHS100X100X5	1210	17.8	35.5	S355J2H	BR
D3-4	2	CFRHS100X100X8	1374	29.9	59.9	S355J2H	BR
D3-5	2	CFRHS100X100X5	1721	25.3	50.5	S355J2H	BR
D3-6	2	UPE100	1425	14.2	28.5	S355J2	BR
D3-7	2	CFRHS100X100X5	1953	28.7	57.3	S355J2H	BR
D3-8	2	UPE100	1994	19.9	39.9	S355J2	BR
D3-9	2	UPE100	1705	17.1	34.1	S355J2	BR
D3-10	2	UPE100	2213	22.1	44.3	S355J2	BR
D3-11	2	UPE100	2221	22.2	44.4	S355J2	BR
D3-12	2	UPE100	1990	19.9	39.8	S355J2	BR
D3-13	2	UPE100	2446	24.5	48.9	S355J2	BR
D3-14	2	CFRHS100X60X6	2459	33.0	66.1	S355J2H	BR
D3-15	2	UPE100	2275	22.7	45.5	S355J2	BR
D3-16	2	UPE100	2685	26.9	53.7	S355J2	BR
F-1	2	CFRHS100X100X8	210	4.6	9.2	S355J2H	BR
L3-1	2	L180*16	11950	529.6	1059.2	S355J2	
L3-2	4	L180*16	1190	52.7	211.0	S355J2	
L3-3	2	L180*16	11950	529.6	1059.2	S355J2	
PL-1	2	PL15*140	250	4.2	8.4	S355J2	
PL-2	2	PL40*200	490	25.7	51.4	S355J2-Z35	
PL-3	2	PL40*325	490	42.6	85.3	S355J2-Z35	
PL-4	2	PL15*100	200	2.3	4.7	S355J2	
PL-5	14	PL5*83	83	0.3	3.8	S355J2	
PL-6	12	PL5*89	89	0.3	3.8	S355J2	
PL-7	4	PL5*47	87	0.2	0.6	S355J2	
U3-1	2	L180*18	1839	91.1	182.2	S355J2	
U3-2	2	L180*18	11950	591.7	1183.5	S355J2	
U3-3	2	L180*18	1839	91.1	182.2	S355J2	
U3-4	2	L180*18	11950	591.7	1183.5	S355J2	
WELDS	1%				59.8		
TOTAL					6037.5		



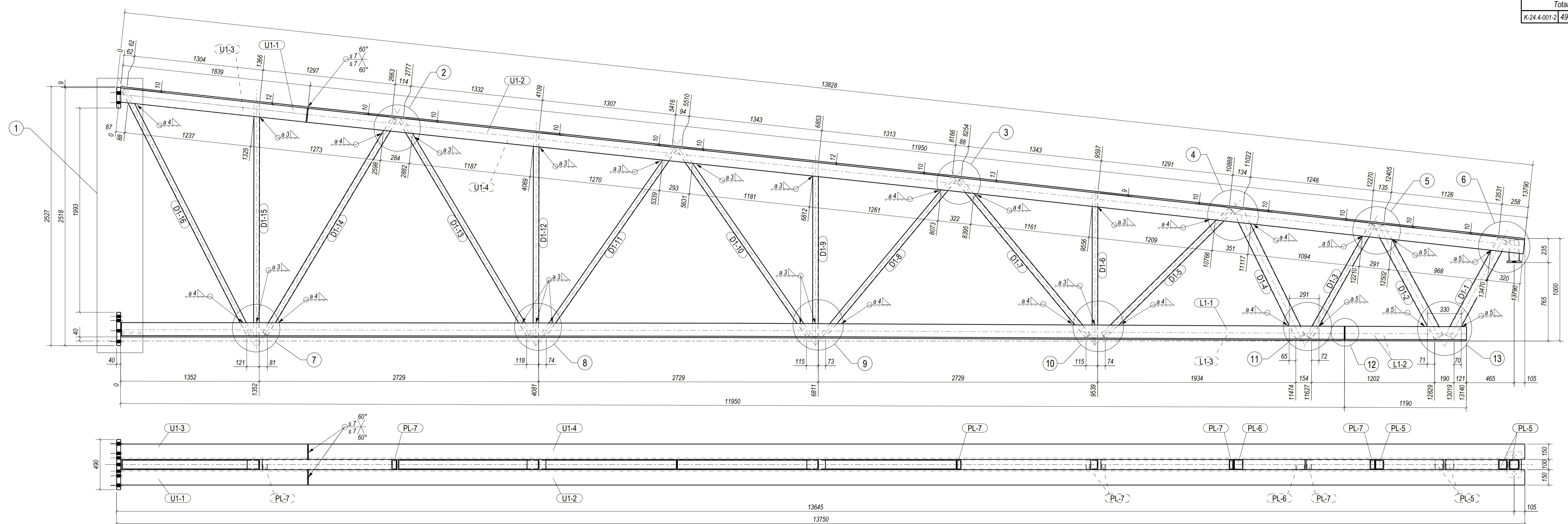
Technical requirements		
Execution class:	EXC2	EN 1090-2
Tolerance class:	1	EN 1090-2
Welding class:	B	EN ISO 5817
Thermal cutting class:	442	EN ISO 9013
Preparation grade:	P2	EN ISO 8501-3
Surface treatment:	Sa2.5	EN ISO 8501-1
Corrosion class:	C2_EPPUR120/2	
Colour:		

Fastener list							
Diameter and length	Package, mm	Thread, mm	Qty.	Weight, kg	Standard	Grade	Notes
Bolt							
M24x120	80	54	4	2.1	4014	8.8	
M27x120	80	41	9	6.8	EN14399-4	10.9	
Nut							
M24			4	0.4	4032	8	
M27			9	1.8	EN14399	10	
Washer							
M24			8	0.26	7089		
M27			18	1.15	EN14399-6		
TOTAL:				12.5			

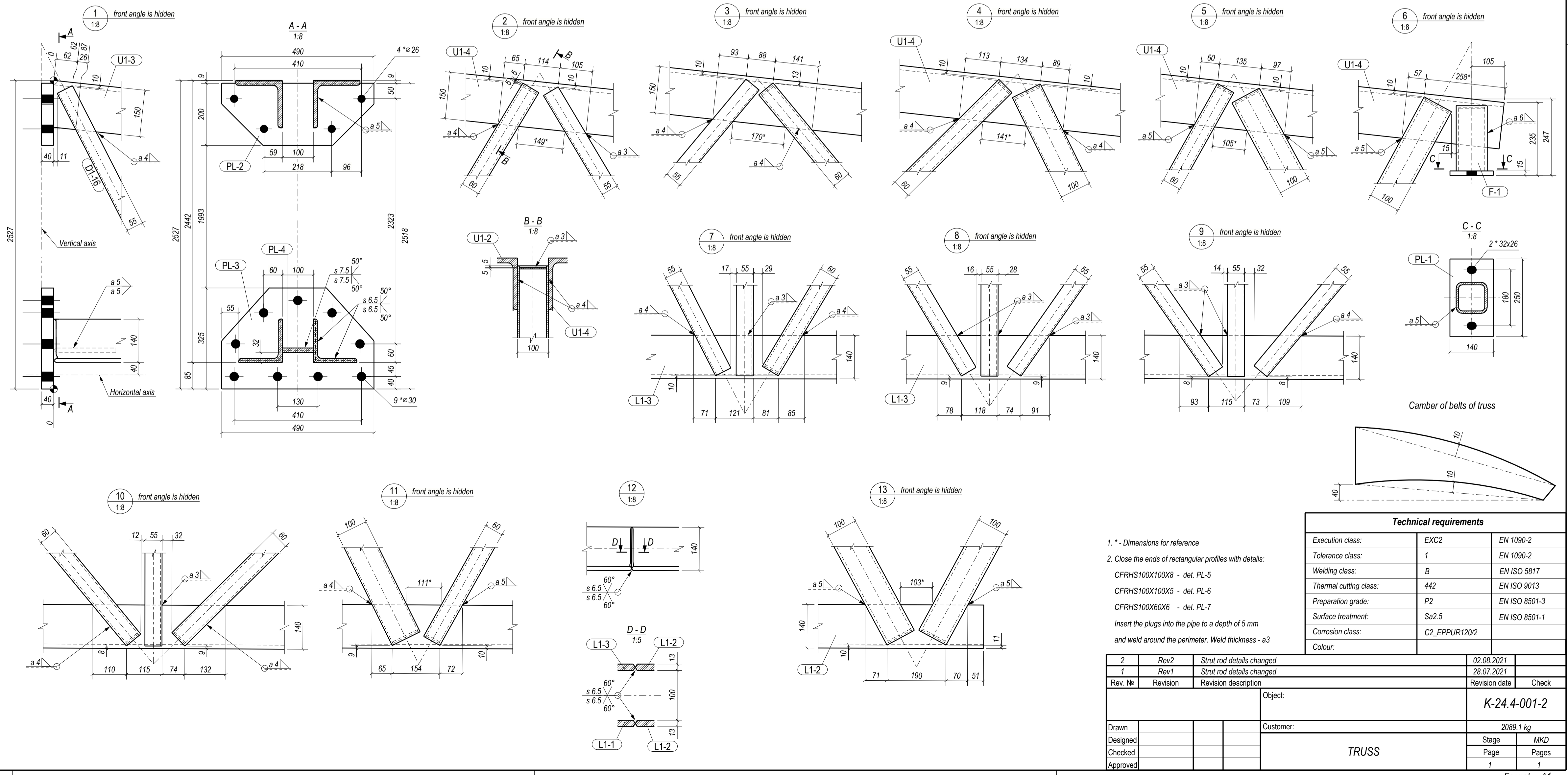


Rev. No	Revision	Revision description	Revision date	Check
2	Rev2	Strut rod details changed	02.08.2021	
1	Rev1	Strut rod details changed	28.07.2021	

SPECIFICATION							
Part pos.	Qty.	Profile	Length, mm	Weight, kg	Weight total, kg	Steel	Note
WELDS	1%				0.0		
SUBASSEMBLY							
K-24.4-003-1	1	TRUSS		3018.7	3018.7	490 x 2527 x 13828	
K-24.4-003-2	1	TRUSS		3018.7	3018.7	490 x 2527 x 13828	
TOTAL:					6037.5		
						Object: K-24.4-003	
						Customer: TRUSS	
Drawn						6037.5 kg	
Designed						Page	MKD
Checked						1	1
Approved						1	1



SPECIFICATION							
Part pos.	Qty.	Profile	Length, mm	Weight, kg	Weight total, kg	Steel	Note
D1-1	1	CFRHS100X100X8	1092	23.8	23.8	S355J2H	BR
D1-2	1	CFRHS100X100X8	1231	26.8	26.8	S355J2H	BR
D1-3	1	CFRHS100X60X6	1274	17.1	17.1	S355J2H	BR
D1-4	1	CFRHS100X100X5	1374	20.2	20.2	S355J2H	BR
D1-5	1	CFRHS100X60X6	1763	23.7	23.7	S355J2H	BR
D1-6	1	UPE100	1425	14.2	14.2	S355J2	BR
D1-7	1	CFRHS100X60X6	1985	26.7	26.7	S355J2H	BR
D1-8	1	UPE100	1994	19.9	19.9	S355J2	BR
D1-9	1	UPE100	1705	17.1	17.1	S355J2	BR
D1-10	1	UPE100	2213	22.1	22.1	S355J2	BR
D1-11	1	UPE100	2221	22.2	22.2	S355J2	BR
D1-12	1	UPE100	1990	19.9	19.9	S355J2	BR
D1-13	1	UPE100	2446	24.5	24.5	S355J2	BR
D1-14	1	CFRHS100X60X6	2459	33.0	33.0	S355J2H	BR
D1-15	1	UPE100	2275	22.7	22.7	S355J2	BR
D1-16	1	UPE100	2685	26.9	26.9	S355J2	BR
F-1	1	CFRHS100X100X8	210	4.6	4.6	S355J2H	BR
L1-1	1	L140*13	11950	334.6	334.6	S355J2	
L1-2	2	L140*13	1190	33.3	66.6	S355J2	
L1-3	1	L140*13	11950	334.6	334.6	S355J2	
PL-1	1	PL15*140	250	4.2	4.2	S355J2	
PL-2	1	PL40*200	490	25.7	25.7	S355J2-Z35	
PL-3	1	PL40*325	490	42.6	42.6	S355J2-Z35	
PL-4	1	PL15*100	200	2.3	2.3	S355J2	
PL-5	5	PL5*83	83	0.3	1.4	S355J2	
PL-6	2	PL5*89	89	0.3	0.6	S355J2	
PL-7	8	PL5*47	87	0.2	1.3	S355J2	
U1-1	1	L150*14	1839	59.3	59.3	S355J2	
U1-2	1	L150*14	11950	385.2	385.2	S355J2	
U1-3	1	L150*14	1839	59.3	59.3	S355J2	
U1-4	1	L150*14	11950	385.2	385.2	S355J2	
WELDS				1%	20.7		
TOTAL					2089.1		

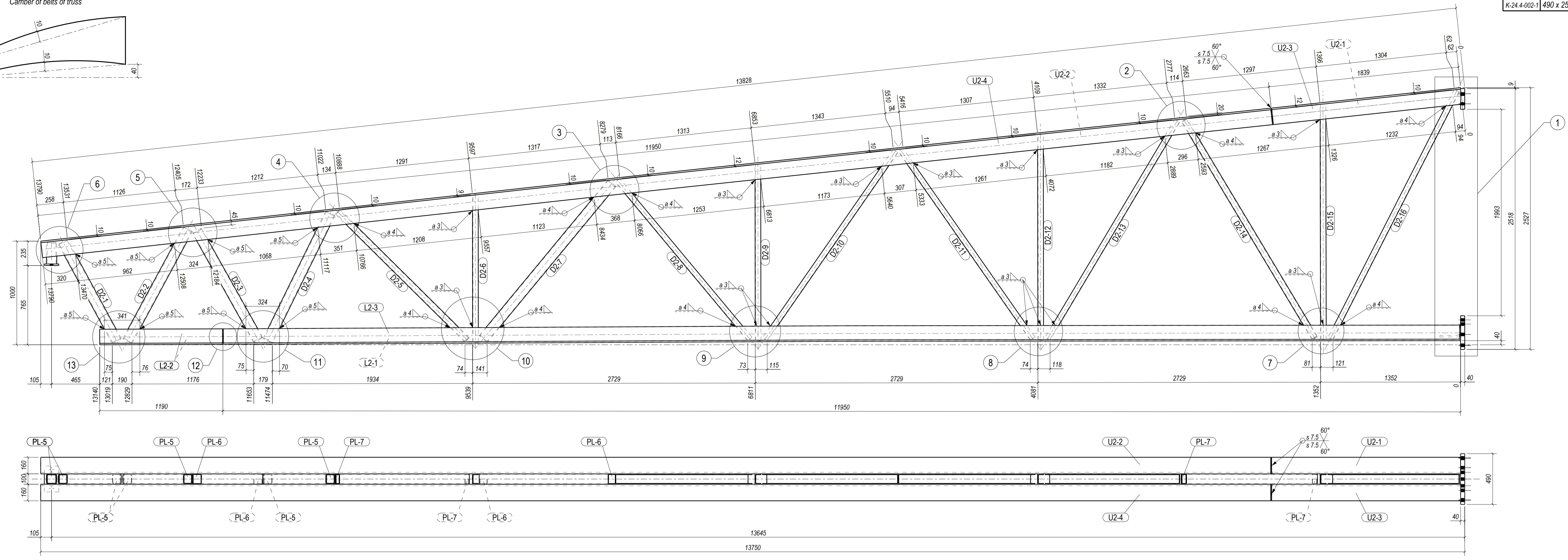
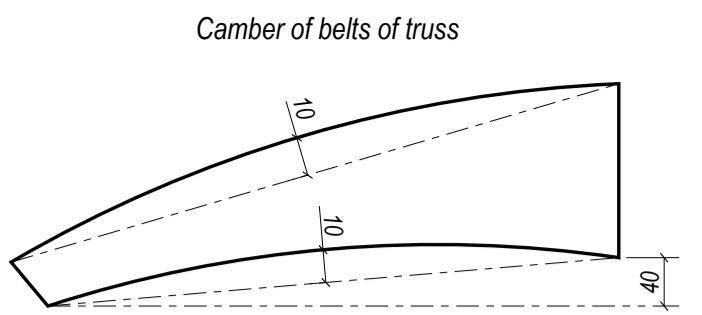


1. * - Dimensions for reference
2. Close the ends of rectangular profiles with details:
CFRHS100X100X8 - det. PL-5
CFRHS100X100X5 - det. PL-6
CFRHS100X60X6 - det. PL-7
Insert the plugs into the pipe to a depth of 5 mm and weld around the perimeter. Weld thickness - a3

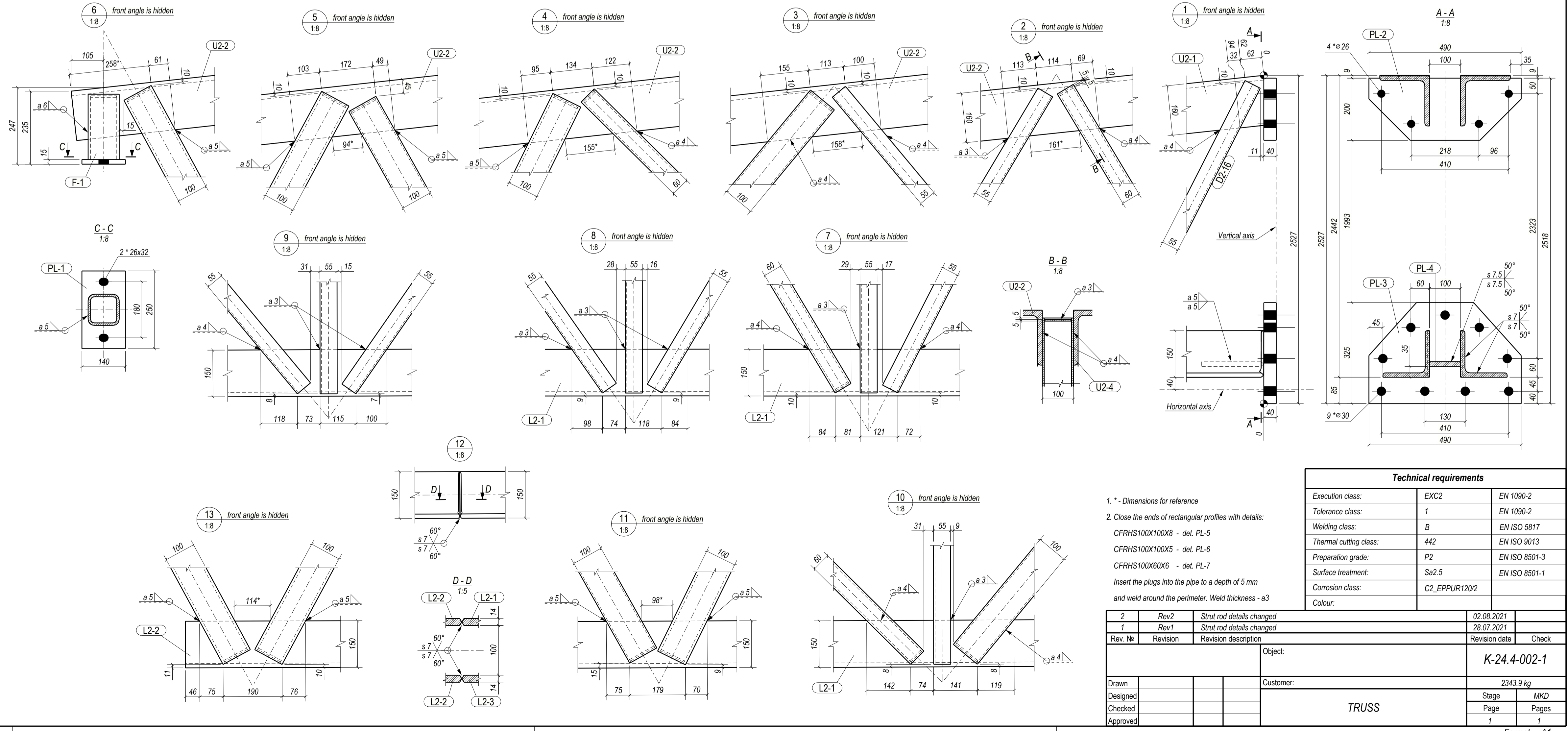
Technical requirements		
Execution class:	EXC2	EN 1090-2
Tolerance class:	1	EN 1090-2
Welding class:	B	EN ISO 5817
Thermal cutting class:	442	EN ISO 9013
Preparation grade:	P2	EN ISO 8501-3
Surface treatment:	Sa2.5	EN ISO 8501-1
Corrosion class:	C2_EPPUR120/2	
Colour:		

Rev. N°	Revision	Revision description	Object	Revision date	Check
2	Rev2	Strut rod details changed		02.08.2021	
1	Rev1	Strut rod details changed		28.07.2021	

Customer: 2089.1 kg
Stage: MKD
Page: 1
Pages: 1
Format: A1



SPECIFICATION							
Part pos.	Qty.	Profile	Length, mm	Weight, kg	Weight total, kg	Steel	Note
D2-1	1	CFRHS100X100X8	1092	23.8	23.8	S355J2H	BR
D2-2	1	CFRHS100X100X8	1231	26.8	26.8	S355J2H	BR
D2-3	1	CFRHS100X100X5	1210	17.8	17.8	S355J2H	BR
D2-4	1	CFRHS100X100X8	1374	29.9	29.9	S355J2H	BR
D2-5	1	CFRHS100X60X6	1763	23.7	23.7	S355J2H	BR
D2-6	1	UPE100	1425	14.2	14.2	S355J2	BR
D2-7	1	CFRHS100X100X5	1953	28.7	28.7	S355J2H	BR
D2-8	1	UPE100	1994	19.9	19.9	S355J2	BR
D2-9	1	UPE100	1705	17.1	17.1	S355J2	BR
D2-10	1	UPE100	2213	22.1	22.1	S355J2	BR
D2-11	1	UPE100	2221	22.2	22.2	S355J2	BR
D2-12	1	UPE100	1990	19.9	19.9	S355J2	BR
D2-13	1	UPE100	2446	24.5	24.5	S355J2	BR
D2-14	1	CFRHS100X60X6	2459	33.0	33.0	S355J2H	BR
D2-15	1	UPE100	2275	22.7	22.7	S355J2	BR
D2-16	1	UPE100	2685	26.9	26.9	S355J2	BR
F-1	1	CFRHS100X100X8	210	4.6	4.6	S355J2H	BR
L2-1	1	L150*14	11950	385.2	385.2	S355J2	
L2-2	2	L150*14	1190	38.4	76.7	S355J2	
L2-3	1	L150*14	11950	385.2	385.2	S355J2	
PL-1	1	PL15*140	250	4.2	4.2	S355J2	
PL-2	1	PL40*200	490	25.7	25.7	S355J2-Z35	
PL-3	1	PL40*325	490	42.6	42.6	S355J2-Z35	
PL-4	1	PL15*100	200	2.3	2.3	S355J2	
PL-5	7	PL5*83	83	0.3	1.9	S355J2	
PL-6	4	PL5*89	89	0.3	1.3	S355J2	
PL-7	4	PL5*47	87	0.2	0.6	S355J2	
U2-1	1	L160*15	1839	67.8	67.8	S355J2	
U2-2	1	L160*15	11950	440.7	440.7	S355J2	
U2-3	1	L160*15	1839	67.8	67.8	S355J2	
U2-4	1	L160*15	11950	440.7	440.7	S355J2	
WELDS				1%	23.2		
TOTAL					2343.9		



Technical requirements			
Execution class:	EXC2	EN 1090-2	
Tolerance class:	1	EN 1090-2	
Welding class:	B	EN ISO 5817	
Thermal cutting class:	442	EN ISO 9013	
Preparation grade:	P2	EN ISO 8501-3	
Surface treatment:	Sa2.5	EN ISO 8501-1	
Corrosion class:	C2_EPPUR120/2		
Colour:			

1	Rev1	Strut rod details changed	02.08.2021
2	Rev2	Strut rod details changed	28.07.2021
Rev. Nr.	Revision	Revision description	Revision date
Object:	TRUSS		
Customer:	2343.9 kg		
Drawn:			Stage MKD
Designed:			Page
Checked:			Pages
Approved:			1