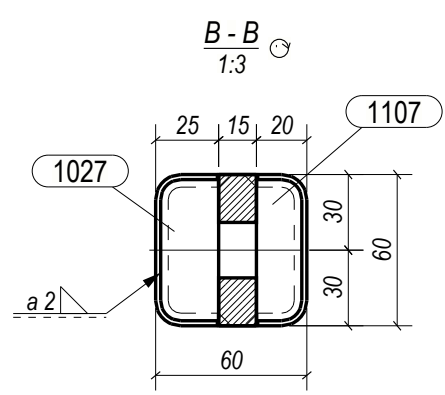
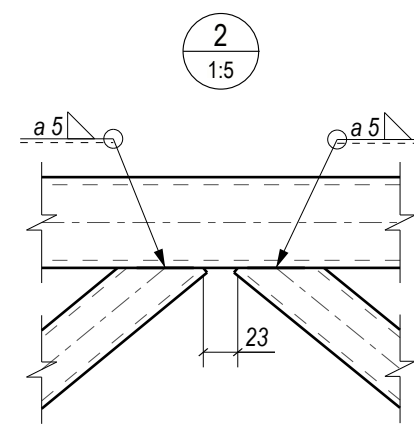
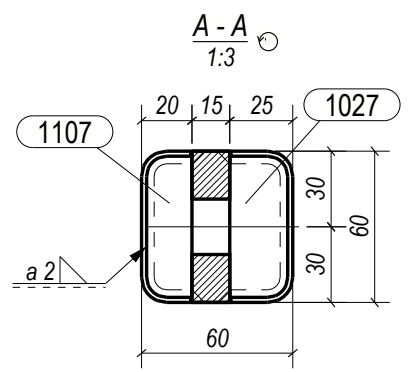
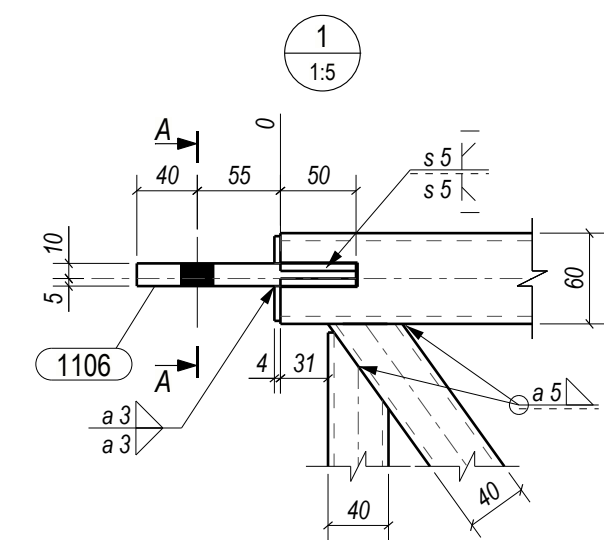
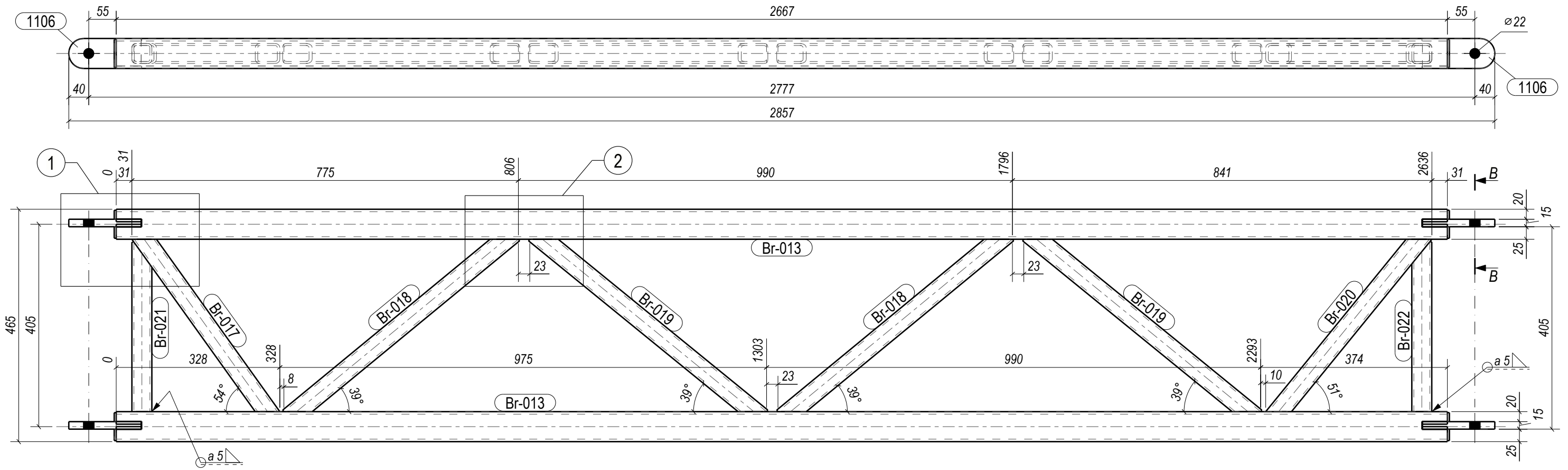


Technical requirements		
Execution class:	EXC2	EN 1090-2
Tolerance class:	2	EN 1090-2
Welding class:	C	EN ISO 5817
Thermal cutting class:	442	EN ISO 9013
Preparation grade:	P2	EN ISO 8501-3
Surface treatment:	Sa2.5	EN ISO 8501-1
Corrosion class:	C1H EPPUR120/2	
Colour:	RAL9016	

SPECIFICATION							
Part pos.	Qty.	Profile	Length, mm	Weight, kg	Weight total, kg	Steel	Note
1029	2	PL8*60	145	0.5	1.0	S355J2	
1030	4	PL4*24	56	0.0	0.2	S355J2	
Br-01	1	CFRHS60X60X3	2030	10.5	10.5	S355J2H	
WELDS				1%	0.1		
TOTAL					11.8		

Object:			556.0S-BR101	
Customer:			11.8 kg	
Drawn			<b>BRACE</b>	
Designed				
Checked				
Approved				
			Stage	MKD
			Page	Pages
			1	1

Total for the project		
BR202	465 x 60 x 2857	1



SPECIFICATION							
Part pos.	Qty.	Profile	Length, mm	Weight, kg	Weight total, kg	Steel	Note
1027	4	PL4*23	56	0.0	0.2	S355J2	
1106	4	PL15*60	145	1.0	3.8	S355J2	
1107	4	PL4*18	56	0.0	0.1	S355J2	
Br-013	2	CFRHS60X60X5	2667	21.6	43.3	S355J2H	
Br-017	1	CFRHS40X40X4	453	1.9	1.9	S355J2H	
Br-018	2	CFRHS40X40X4	582	2.4	4.9	S355J2H	
Br-019	2	CFRHS40X40X4	586	2.5	4.9	S355J2H	
Br-020	1	CFRHS40X40X4	478	2.0	2.0	S355J2H	
Br-021	1	CFRHS40X40X4	339	1.4	1.4	S355J2H	
Br-022	1	CFRHS40X40X4	340	1.4	1.4	S355J2H	
				WELDS	1%	0.6	
<b>TOTAL</b>					<b>64.5</b>		

Technical requirements		
Execution class:	EXC2	EN 1090-2
Tolerance class:	1	EN 1090-2
Welding class:	C	EN ISO 5817
Thermal cutting class:	442	EN ISO 9013
Preparation grade:	P2	EN ISO 8501-3
Surface treatment:	Sa2.5	EN ISO 8501-1
Corrosion class:	C1	EPPUR120/2
Colour:	RAL9016	

Object:		<b>556.0S-BR202</b>		
Customer:		64.5 kg		
Drawn		<b>BRACE</b>	Stage	MKD
Designed			Page	Pages
Checked			1	1
Approved				