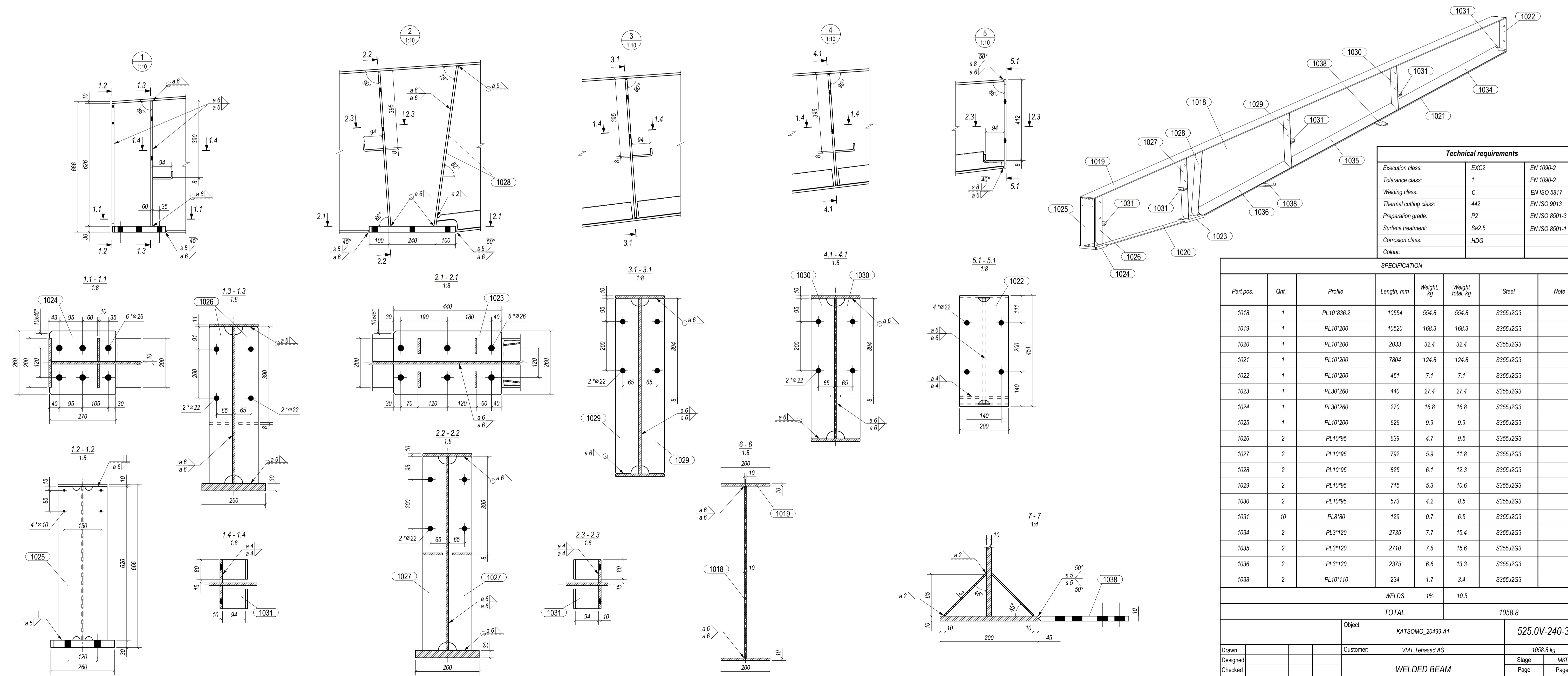
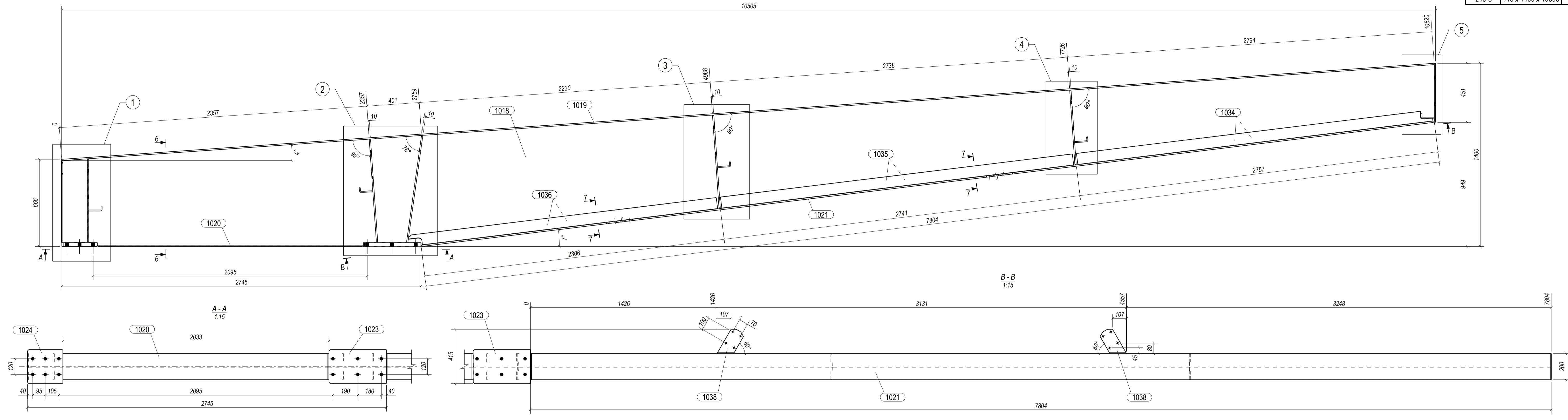


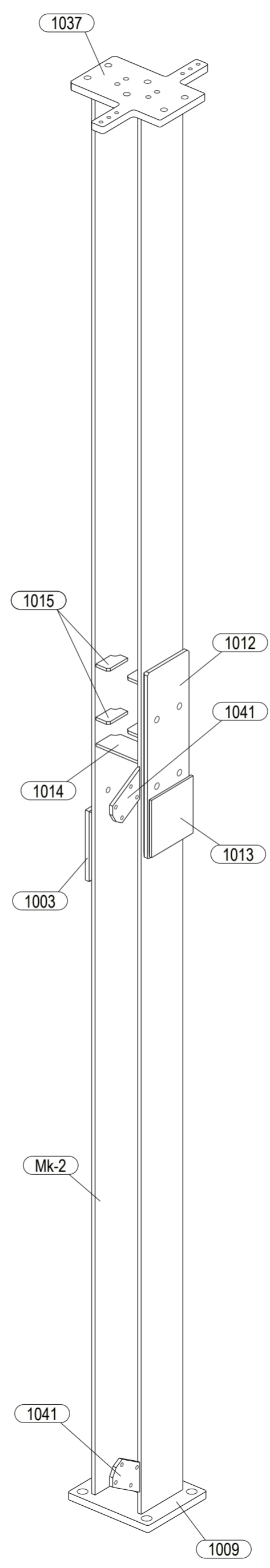
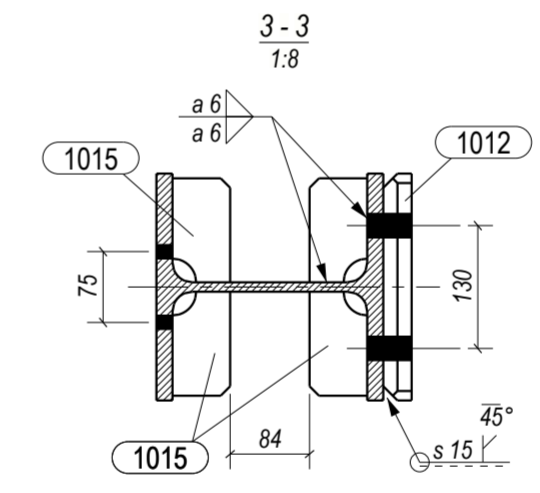
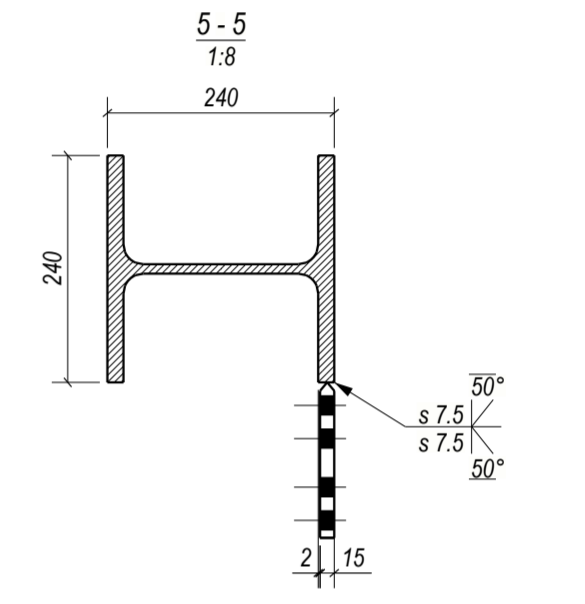
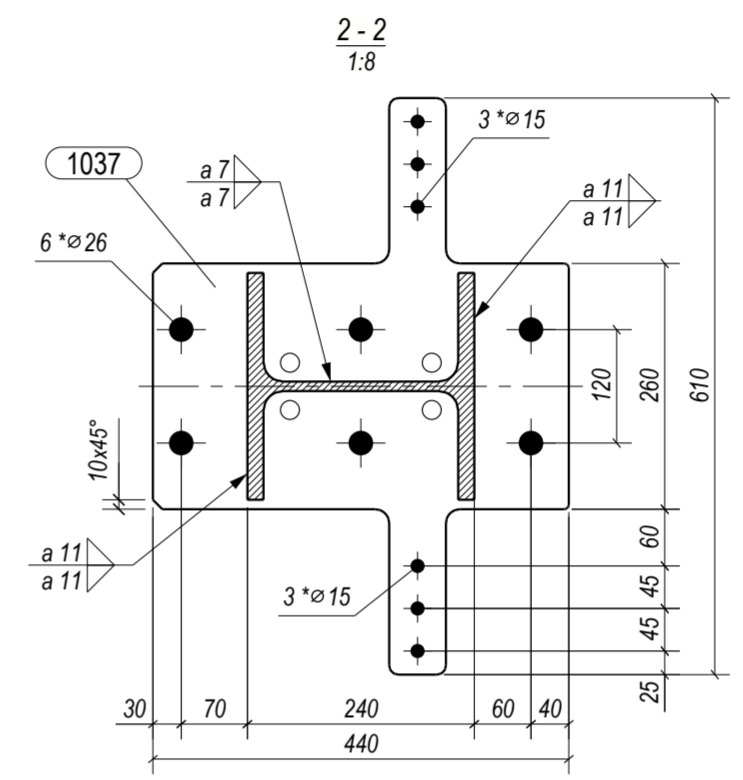
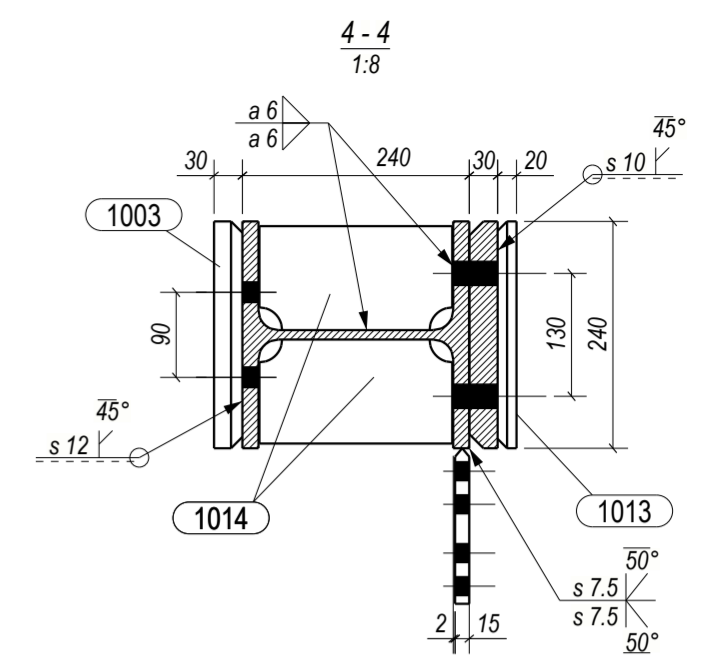
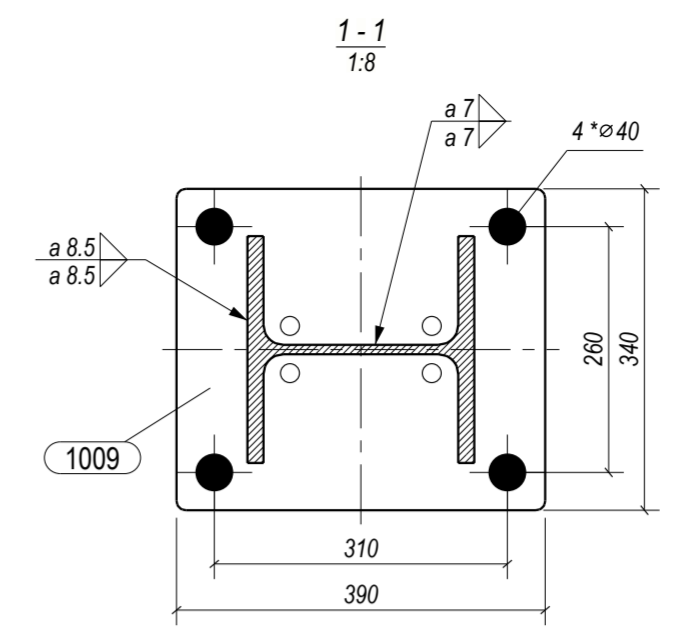
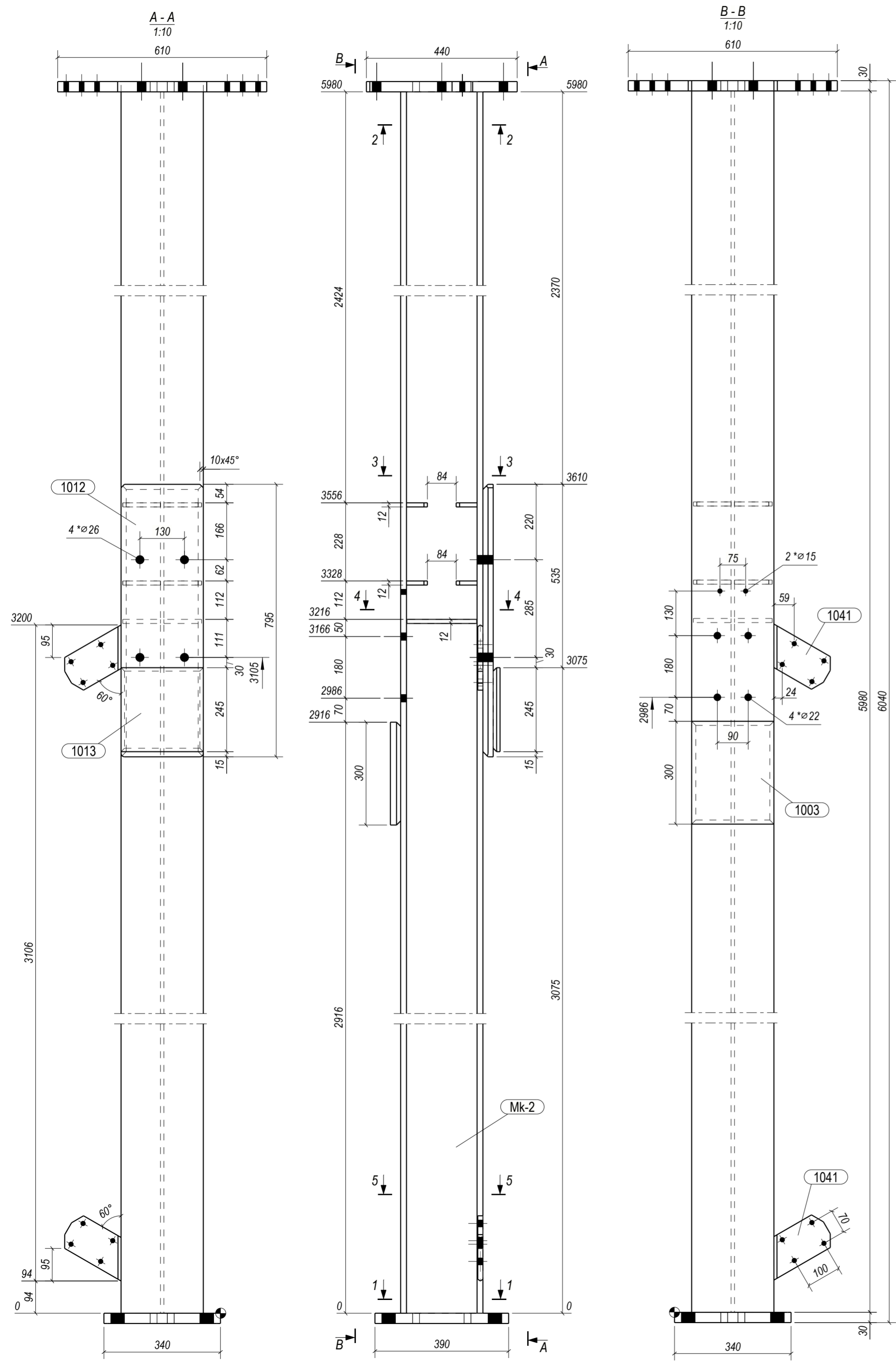
10505



Technical requirements		
Execution class:	EXC2	EN 1090-2
Tolerance class:	1	EN 1090-2
Welding class:	C	EN ISO 5817
Thermal cutting class:	442	EN ISO 9013
Preparation grade:	P2	EN ISO 8501-3
Surface treatment:	Sa2.5	EN ISO 8501-1
Corrosion class:	HDG	
Colour:		

SPECIFICATION						
Part pos.	Qnt.	Profile	Length, mm	Weight, kg	Weight total, kg	Steel
1018	1	PL10*836.2	10554	554.8	554.8	S355J2G3
1019	1	PL10*200	10520	168.3	168.3	S355J2G3
1020	1	PL10*200	2033	32.4	32.4	S355J2G3
1021	1	PL10*200	7804	124.8	124.8	S355J2G3
1022	1	PL10*200	451	7.1	7.1	S355J2G3
1023	1	PL30*260	440	27.4	27.4	S355J2G3
1024	1	PL30*260	270	16.8	16.8	S355J2G3
1025	1	PL10*200	626	9.9	9.9	S355J2G3
1026	2	PL10*95	639	4.7	9.5	S355J2G3
1027	2	PL10*95	792	5.9	11.8	S355J2G3
1028	2	PL10*95	825	6.1	12.3	S355J2G3
1029	2	PL10*95	715	5.3	10.6	S355J2G3
1030	2	PL10*95	573	4.2	8.5	S355J2G3
1031	10	PL8*80	129	0.7	6.5	S355J2G3
1034	2	PL3*120	2735	7.7	15.4	S355J2G3
1035	2	PL3*120	2710	7.8	15.6	S355J2G3
1036	2	PL3*120	2375	6.6	13.3	S355J2G3
1038	2	PL10*110	234	1.7	3.4	S355J2G3
WELDS				1%	10.5	
TOTAL					1058.8	

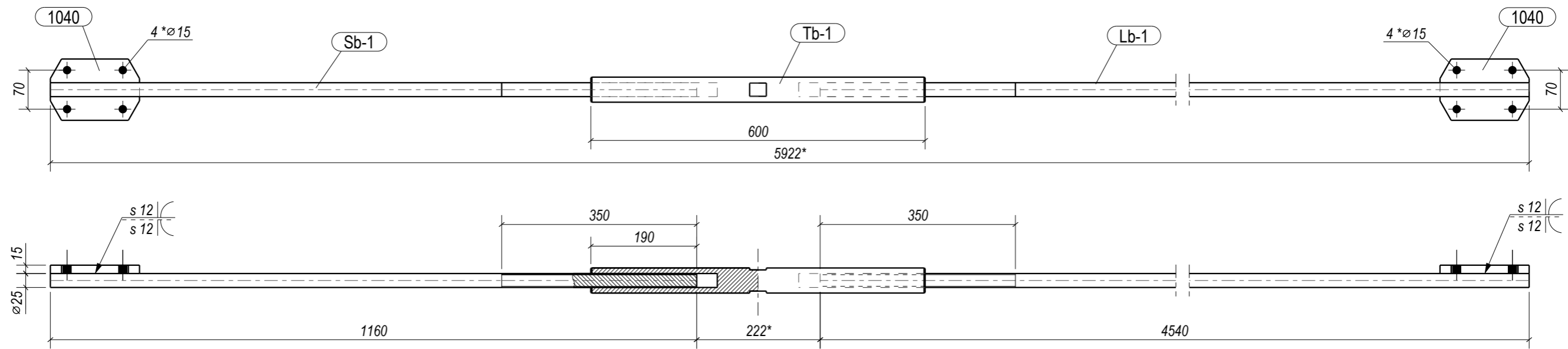
Object:		KATSOMO_20499-A1	525.0V-240-3	
Customer:		VMT Tehased AS	1058.8 kg	
Drawn			Stage	MKD
Designed			Page	Pages
Checked			1	1
Approved			Format: A1	



Technical requirements		
Execution class:	EXC2	EN 1090-2
Tolerance class:	1	EN 1090-2
Welding class:	C	EN ISO 5817
Thermal cutting class:	442	EN ISO 9013
Preparation grade:	P2	EN ISO 8501-3
Surface treatment:	Sa2.5	EN ISO 8501-1
Corrosion class:	HDG	
Colour:		

SPECIFICATION							
Part pos.	Qty.	Profile	Length, mm	Weight, kg	Weight total, kg	Steel	Note
1003	1	PL30*240	300	16.7	16.7	S355J2G3	
1009	1	PL30*340	390	31.8	31.8	S355J2G3	
1012	1	PL30*240	795	43.9	43.9	S355J2G3	
1013	1	PL20*240	245	9.0	9.0	S355J2G3	
1014	2	PL12*110	204	2.1	4.1	S355J2G3	
1015	8	PL12*61	110	0.6	4.7	S355J2G3	
1037	1	PL30*440	610	32.5	32.5	S355J2G3	
1041	2	PL15*110	210	2.2	4.4	S355J2G3	
Mk-2	1	HEB240	5980	507.1	507.1	S355J2G3	
WELDS				1%	6.5		
TOTAL				660.9			
Object:		KATSOMO_20499-A1		525.OV-220-3			
Customer:		VMT Tehased AS		660.9 kg			
Drawn		COLUMN		Stage	MKD		
Designed				Page	Pages		
Checked				1	1		
Approved							

Total for the project		
500-2	110 x 50 x 5922	2



Technical requirements		
Execution class:	EXC2	EN 1090-2
Tolerance class:	1	EN 1090-2
Welding class:	C	EN ISO 5817
Thermal cutting class:	442	EN ISO 9013
Preparation grade:	P2	EN ISO 8501-3
Surface treatment:	Sa2.5	EN ISO 8501-1
Corrosion class:	HDG	
Colour:		

1. * - Reference size

SPECIFICATION								
Part pos.	Qty.	Profile	Length, mm	Weight, kg	Weight total, kg	Steel	Note	
1040	2	PL15*110	160	1.9	3.9	S355J2G3		
Lb-1	1	D25	4540	17.4	17.4	S355J2G3	M25x1.5 Right	
Sb-1	1	D25	1160	4.4	4.4	S355J2G3	M25x1.5 Left	
Tb-1	1	D45	600	5.8	5.8	S355J2G3		
WELDS				1%	0.3			
TOTAL					31.8			
			Object:			KATSOMO_20499-A1		
			Customer:			VMT Tehased AS		
			Object:			525.0V-500-2		
Drawn				Customer:			31.8 kg	
Designed				TURNBUCKLE			Stage	MKD
Checked							Page	Pages
Approved							1	1