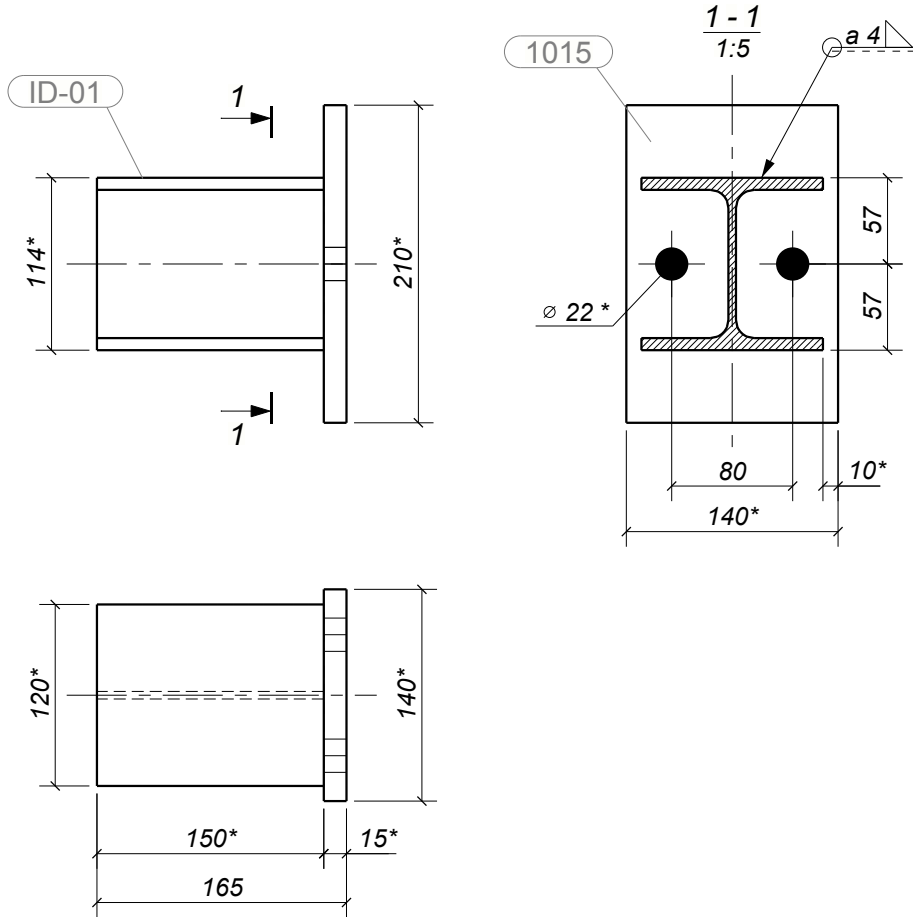


SPECIFICATION

Part	Quantity	Profile	Length, mm	Weight, kg	Weight total, kg	Steel	Note
1015	1	PL15*140	210	3.5	3.5	S355J2	
ID-01	1	HEA120	150	3.0	3.0	S355J2	N/D
WELDS	1%				0.1		
TOTAL					6.6		

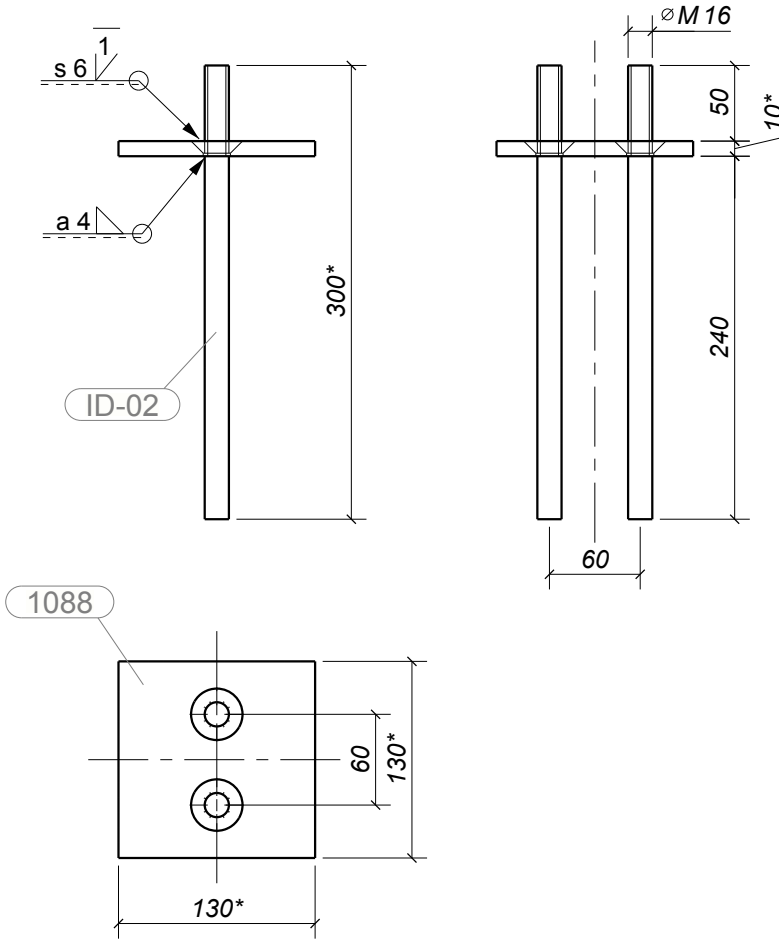


1. Additional NDT according to EN 1090 Tabl.24 U>0,5
2. Execution class: EXC2 EN 1090-2
3. Functional tolerances: Class 1 EN 1090-2
4. Welding class: C EN ISO 5817
5. Thermal cutting class: 442 EN ISO 9013
6. Preparation grade: P2 EN ISO 8501-3
7. Shot blasting till: Sa2 1/2 EN ISO 8501-1
8. Surface treatment: C2-H EN ISO 12944-5 EP60/1
9. Welded seams "a"
10. * - Dimensions for reference

			Object:	New vehicle preparation hall	1373 - ID101	
Drawn			Customer:	"....."	6.6 kg	
Designed			MORTGAGED DETAIL		Stage	MKD
Checked					Page	Pages
Approved					1	1

SPECIFICATION

Part	Quantity	Profile	Length, mm	Weight, kg	Weight total, kg	Steel	Note
1088	1	PL10*130	130	1.3	1.3	S355J2	Countersink
ID-02	2	D16	300	0.4	0.9	S355J2	
WELDS	1%				0.0		
TOTAL					2.1		

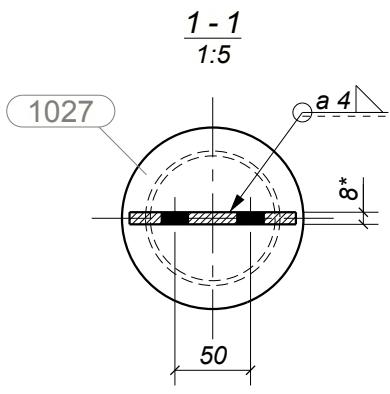
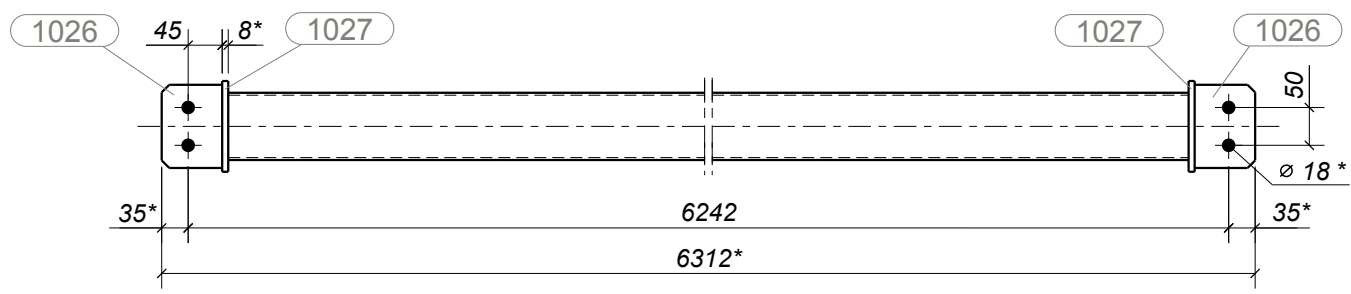
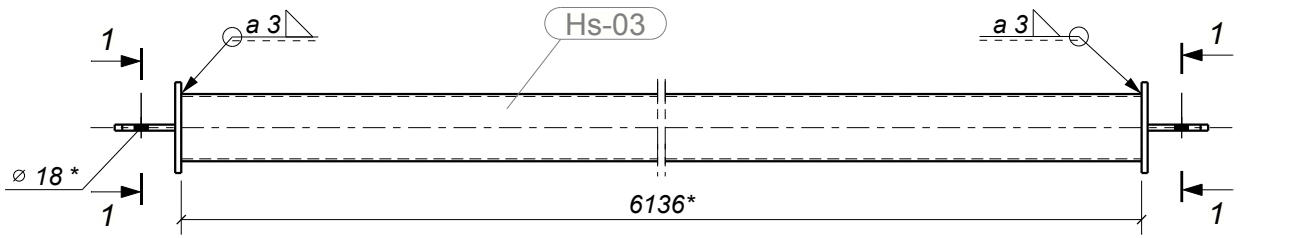


1. Additional NDT according to EN 1090 Tabl.24 U>0,5
2. Execution class: EXC2 EN 1090-2
3. Functional tolerances: Class 1 EN 1090-2
4. Welding class: C EN ISO 5817
5. Thermal cutting class: 442 EN ISO 9013
6. Preparation grade: P2 EN ISO 8501-3
7. Shot blasting till: Sa2 1/2 EN ISO 8501-1
8. Surface treatment: C2-H EN ISO 12944-5 EP60/1
9. Welded seams "a"
10. * - Dimensions for reference

				Object:	New vehicle preparation hall	1373 - ID201		
Drawn				Customer:	"....."	2.1 kg		
Designed				MORTGAGED DETAIL			Stage	MKD
Checked							Page	Pages
Approved							1	1

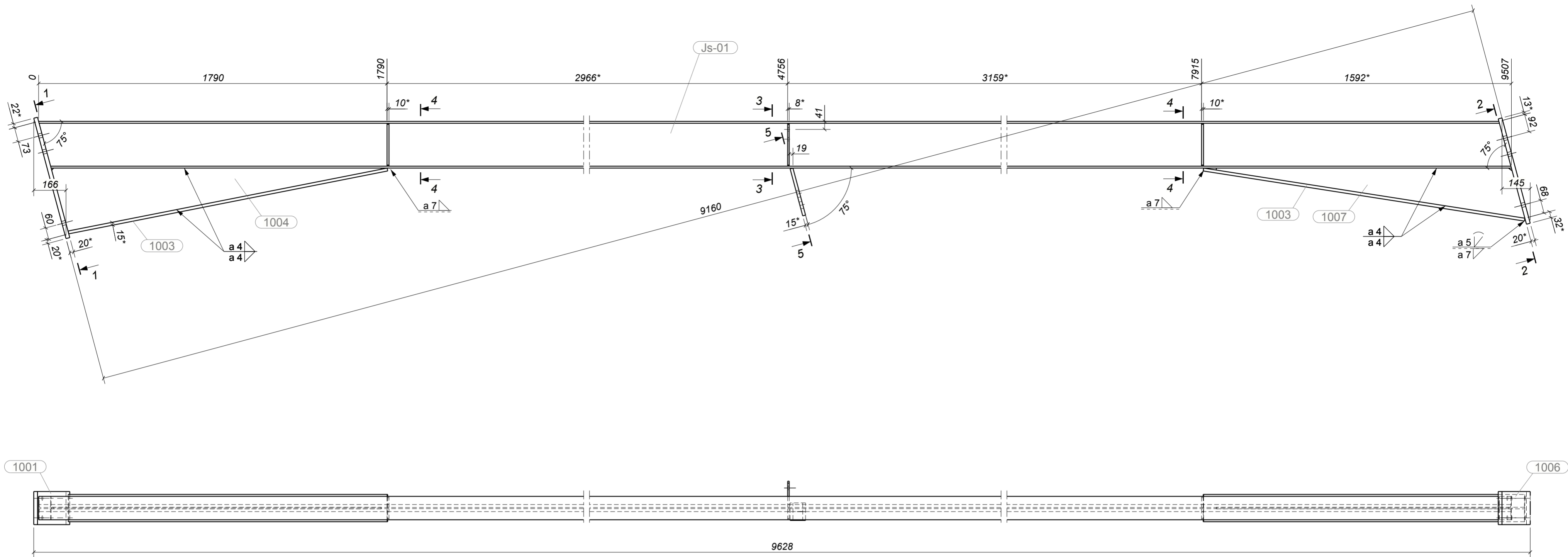
SPECIFICATION

Part	Quantity	Profile	Length, mm	Weight, kg	Weight total, kg	Steel	Note
1026	2	PL8*80	110	0.6	1.1	S355J2	
1027	2	PL8*120	120	0.7	1.4	S355J2	
Hs-03	1	CFCHS88.9X3.2	6136	42.3	42.3	S355J2	N/D
WELDS	1%				0.4		
TOTAL					44.8		

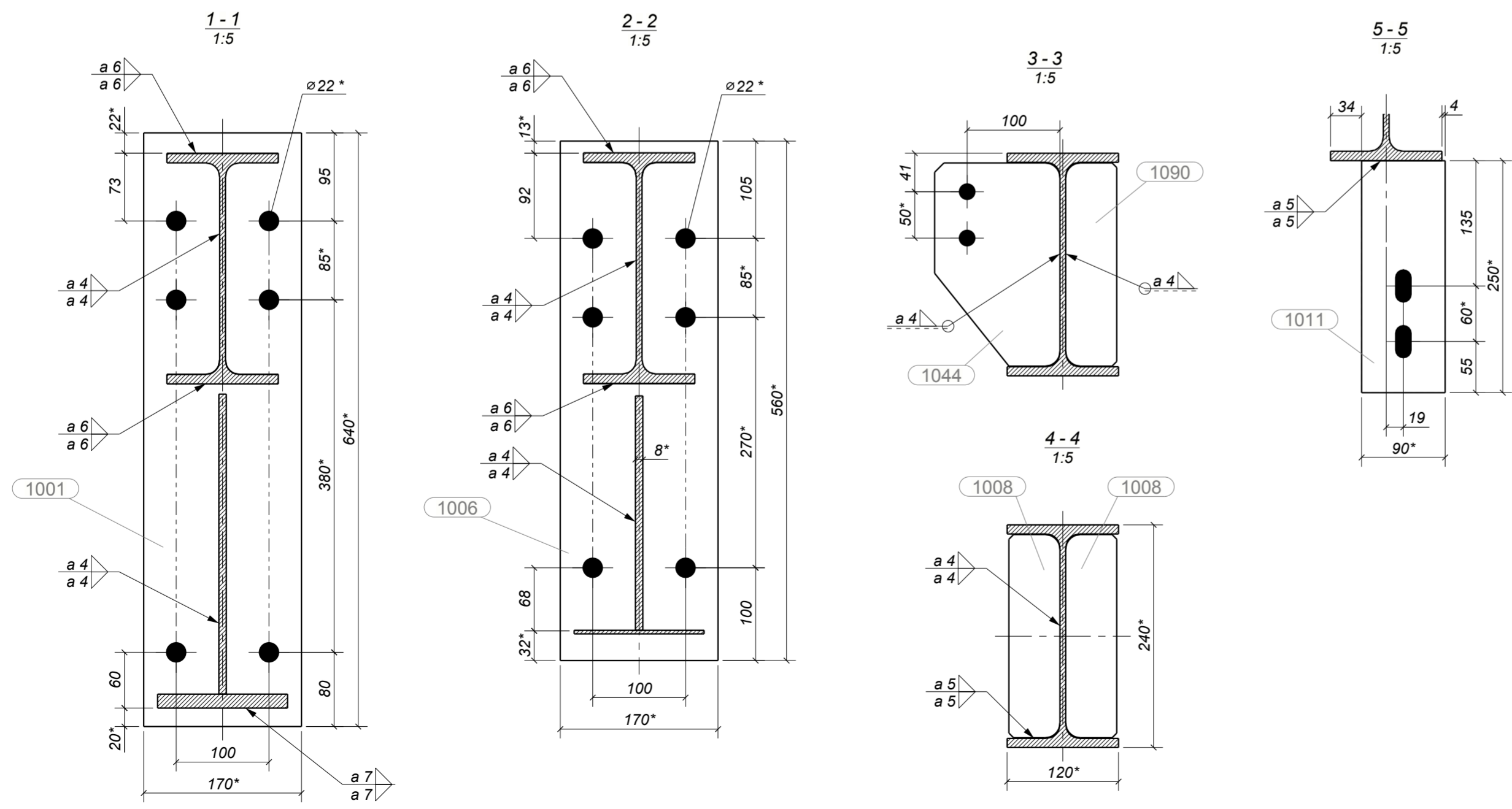


1. Additional NDT according to EN 1090 Tabl.24 U>0,5
2. Execution class: EXC2 EN 1090-2
3. Functional tolerances: Class 1 EN 1090-2
4. Welding class: C EN ISO 5817
5. Thermal cutting class: 442 EN ISO 9013
6. Preparation grade: P2 EN ISO 8501-3
7. Shot blasting till: Sa2 1/2 EN ISO 8501-1
8. Surface treatment: C2-H EN ISO 12944-5 EP120/2
9. Welded seams "a"
10. * - Dimensions for reference

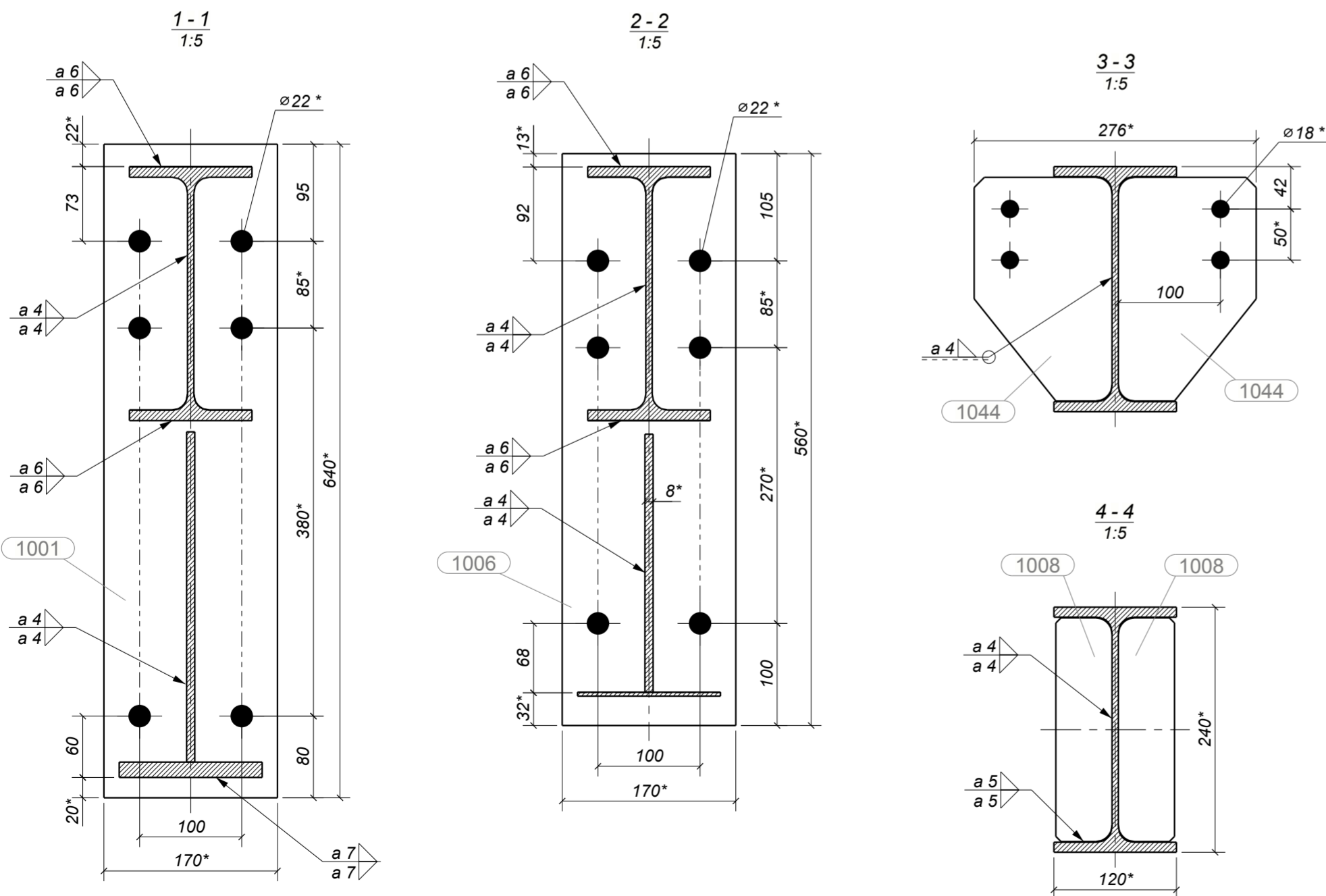
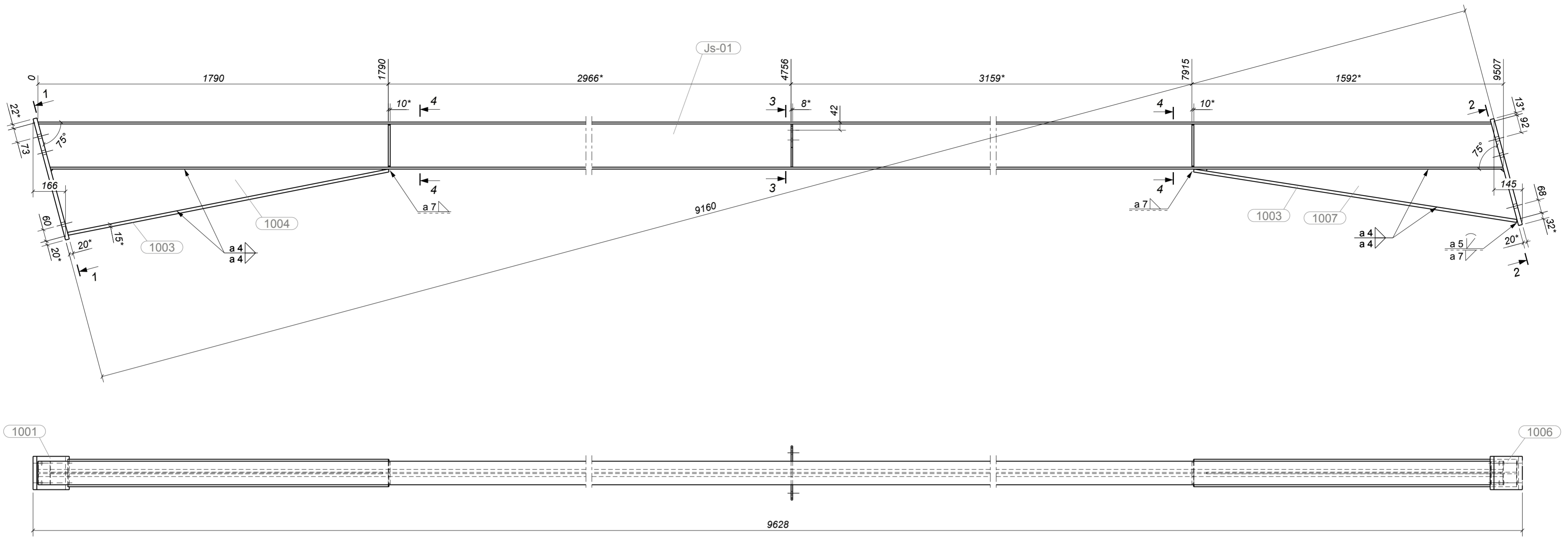
			Object:	<i>New vehicle preparation hall</i>	1373 - Hs101	
Drawn			Customer:	"....."	44.8 kg	
Designed			CONNECTION HORIZONTAL		Stage	MKD
Checked					Page	Pages
Approved					1	1



1. Additional NDT according to EN 1090 Tabl.24 U>0,5
2. Execution class: EN 1090-2 EXC2
3. Functional tolerances: EN 1090-2 Class 1
4. Welding class: EN ISO 5817 C
5. Thermal cutting class: 442 EN ISO 9013
6. Preparation grade: P2 EN ISO 8501-3
7. Shot blasting till: Sa2 1/2 EN ISO 8501-1
8. Surface treatment: C2-H EN ISO 12944-5 EP120/2
9. Welded seams "a"
10. * - Dimensions for reference

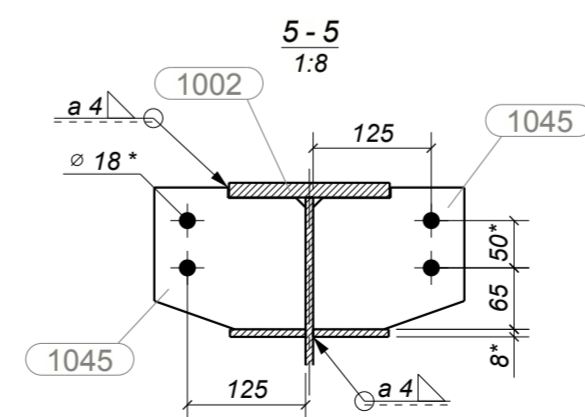
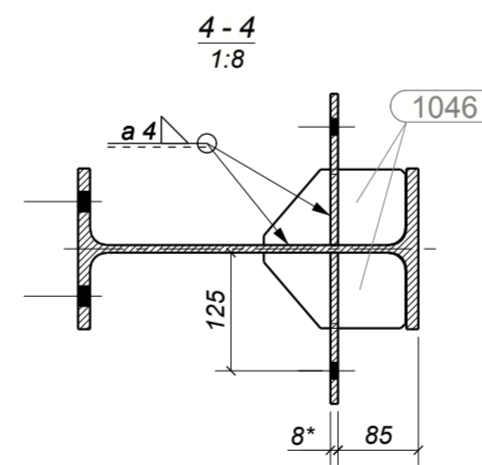
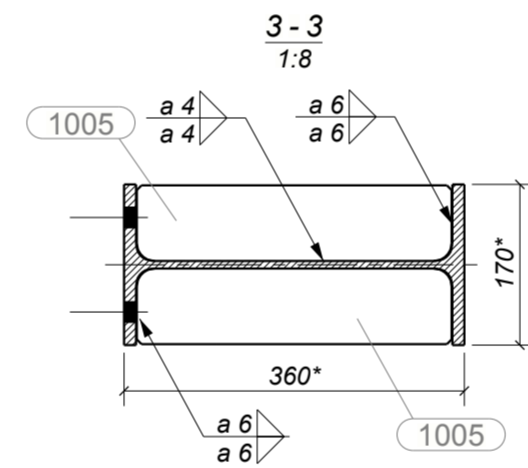
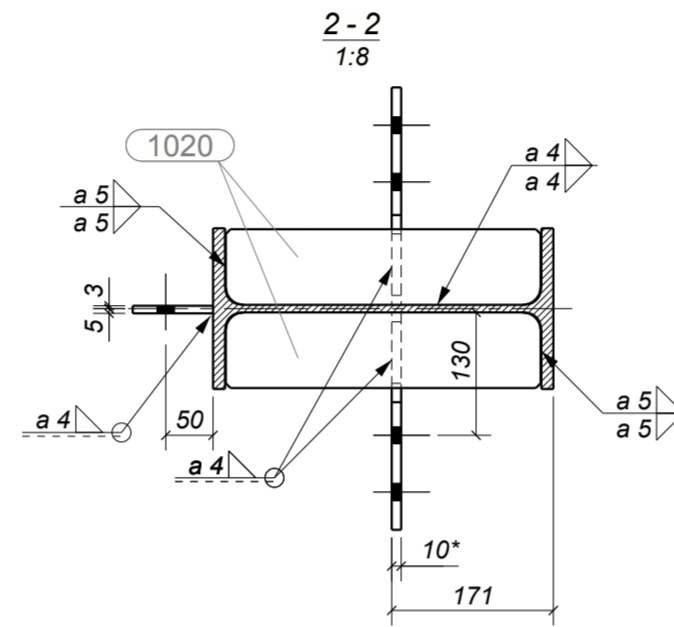
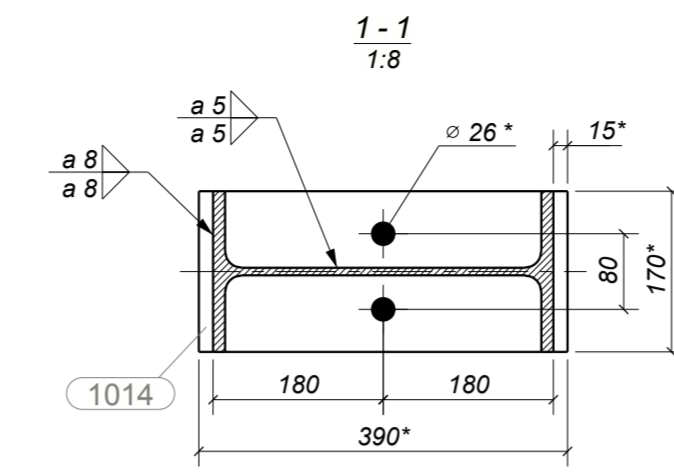
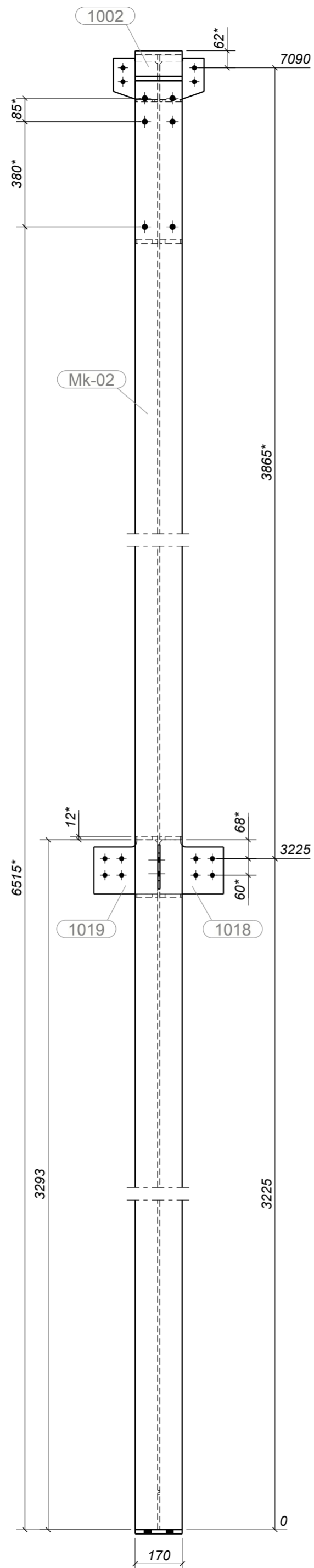
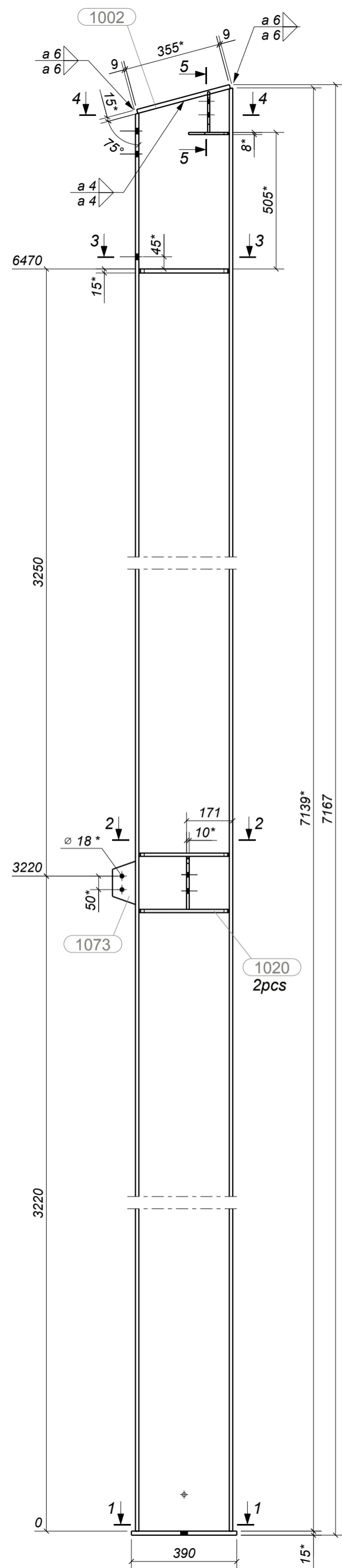


SPECIFICATION							
Part	Quantity	Profile	Length, mm	Weight, kg	Weight total, kg	Steel	Note
1001	1	PL20*170	640	17.4	17.4	S355J2	
1003	2	PL15*140	1670	28.1	56.1	S355J2	
1004	1	PL8*323.2	1693	17.8	17.8	S355J2	
1006	1	PL20*170	560	15.2	15.2	S355J2	
1007	1	PL8*241.3	1605	13.0	13.0	S355J2	
1008	4	PL10*55	219	1.0	3.8	S355J2	
1011	1	PL15*90	250	2.7	2.7	S355J2	
1044	1	PL8*135	219	1.6	1.6	S355J2	
1090	1	PL8*55	219	0.8	0.8	S355J2	
Js-01	1	IPE240	9507	297.3	297.3	S355J2	
WELDS	1%				4.3		
TOTAL					425.8		
Object: New vehicle preparation hall							1373 - Js101
Customer: "....."							425.8 kg
Drawn							
Designed							
Checked							
Approved							
ROOF BEAM						Stage	MKD
1						Page	Pages
1						1	1



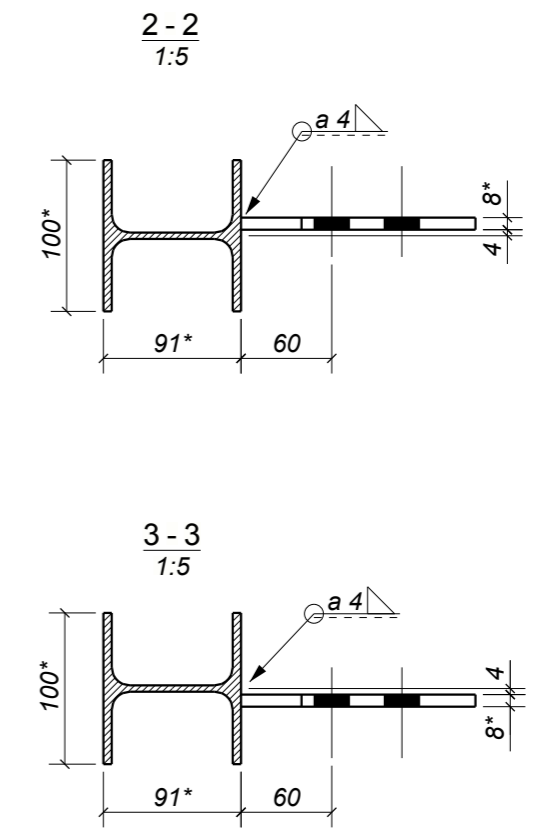
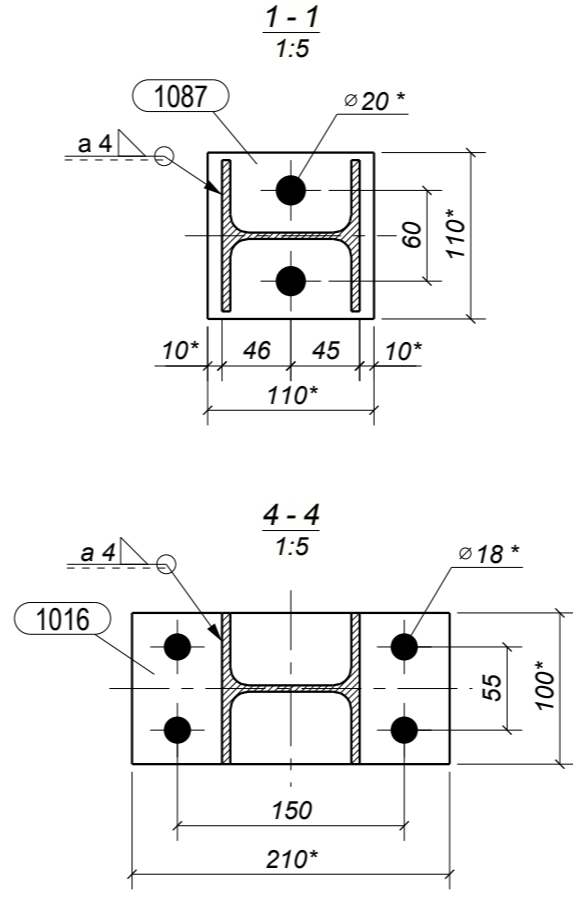
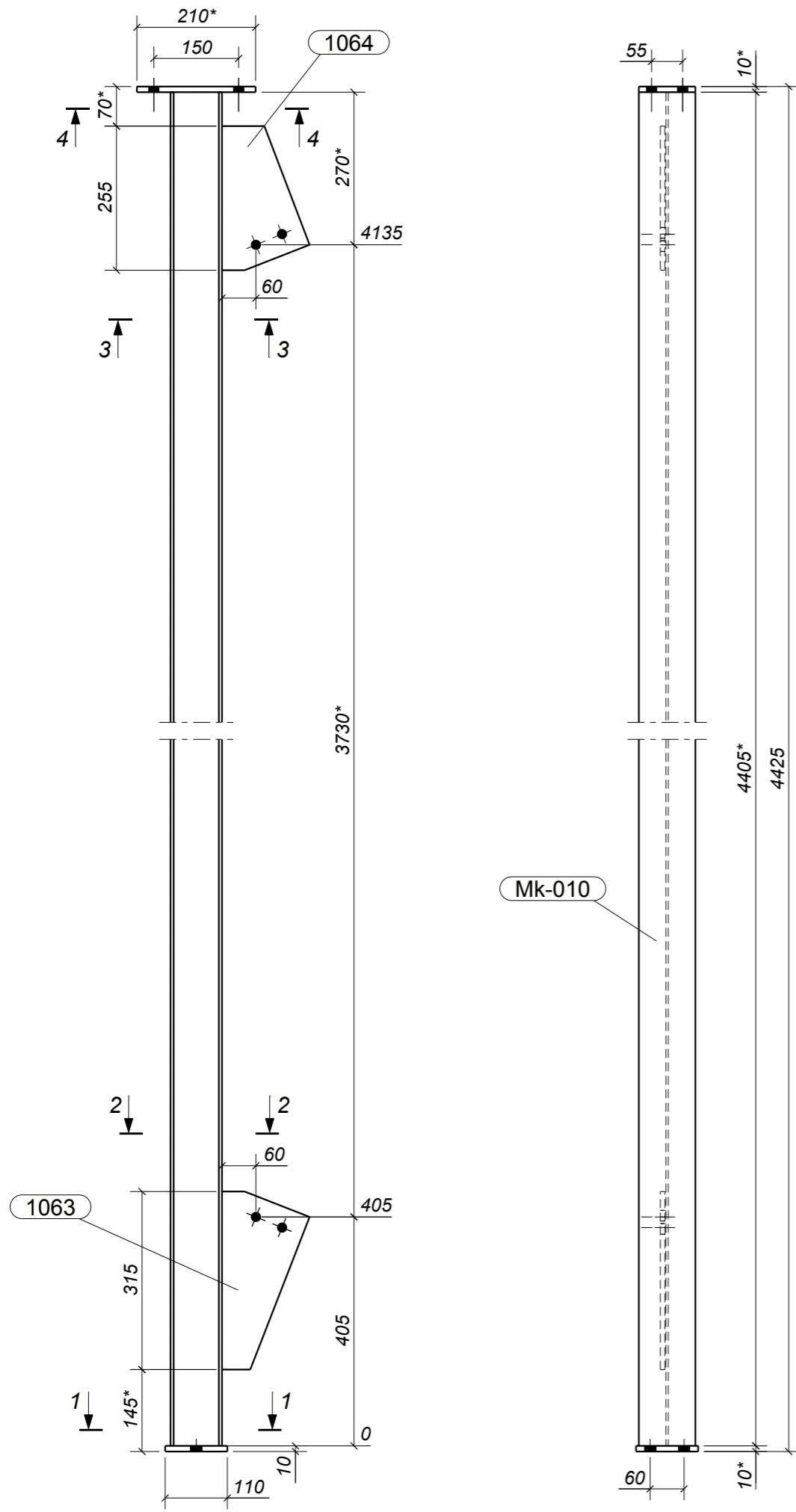
1. Additional NDT according to EN 1090 Tabl.24 U>0,5
2. Execution class: EXC2 EN 1090-2
3. Functional tolerances: Class 1 EN 1090-2
4. Welding class: C EN ISO 5817
5. Thermal cutting class: 442 EN ISO 9013
6. Preparation grade: P2 EN ISO 8501-3
7. Shot blasting till: Sa2 1/2 EN ISO 8501-1
8. Surface treatment: C2-H EN ISO 12944-5 EP120/2
9. Welded seams "a"
10. * - Dimensions for reference

SPECIFICATION							
Part	Quantity	Profile	Length, mm	Weight, kg	Weight total, kg	Steel	Note
1001	1	PL20*170	640	17.4	17.4	S355J2	
1003	2	PL15*140	1670	28.1	56.1	S355J2	
1004	1	PL8*323.2	1693	17.8	17.8	S355J2	
1006	1	PL20*170	560	15.2	15.2	S355J2	
1007	1	PL8*241.3	1605	13.0	13.0	S355J2	
1008	4	PL10*55	219	1.0	3.8	S355J2	
1044	2	PL8*135	219	1.6	3.3	S355J2	
Js-01	1	IPE240	9507	297.3	297.3	S355J2	
WELDS	1%				4.2		
TOTAL					423.9		
Object:			New vehicle preparation hall		1373 - Js102		
Customer:			"....."		423.9 kg		
Drawn							
Designed							
Checked							
Approved							
ROOF BEAM					Stage	MKD	
					Page	Pages	
					1	1	



1. Additional NDT according to EN 1090 Tabl.24 U>0,5
2. Execution class: EXC2 EN 1090-2
3. Functional tolerances: Class 1 EN 1090-2
4. Welding class: C EN ISO 5817
5. Thermal cutting class: 442 EN ISO 9013
6. Preparation grade: P2 EN ISO 8501-3
7. Shot blasting till: Sa2 1/2 EN ISO 8501-1
8. Surface treatment: C2-H EN ISO 12944-5 EP120/2
9. Welded seams "a"
10. * - Dimensions for reference

SPECIFICATION							
Part	Quantity	Profile	Length, mm	Weight, kg	Weight total, kg	Steel	Note
1002	1	PL15*170	355	7.2	7.2	S355J2	N/D
1005	2	PL15*80	333	3.2	6.3	S355J2	
1014	1	PL15*170	390	8.0	8.0	S355J2	
1018	1	PL10*196	230	3.3	3.3	S355J2	
1019	1	PL10*196	230	3.3	3.3	S355J2	
1020	4	PL12*80	333	2.5	10.2	S355J2	
1045	2	PL8*150	160	1.4	2.8	S355J2	
1046	2	PL8*80	150	0.6	1.3	S355J2	
1073	1	PL8*85	160	0.7	0.7	S355J2	
Mk-02	1	IPE360	7139	415.2	415.2	S355J2	
WELDS	1%				4.6		
TOTAL					458.3		
Object:						1373 - Mk102	
Customer:						458.3 kg	
Drawn						Stage	MKD
Designed						Page	Pages
Checked						1	1
Approved							



1. Additional NDT according to EN 1090 Tabl.24 U>0,5
2. Execution class: EXC2 EN 1090-2
3. Functional tolerances: Class 1 EN 1090-2
4. Welding class: C EN ISO 5817
5. Thermal cutting class: 442 EN ISO 9013
6. Preparation grade: P2 EN ISO 8501-3
7. Shot blasting till: Sa2 1/2 EN ISO 8501-1
8. Surface treatment: C2-H EN ISO 12944-5 EP120/2
9. Welded seams "a"
10. * - Dimensions for reference

SPECIFICATION								
Part	Quantity	Profile	Length, mm	Weight, kg	Weight total, kg	Steel	Note	
1016	1	PL10*100	210	1.7	1.7	S355J2		
1063	1	PL8*155	315	2.1	2.1	S355J2		
1064	1	PL8*155	255	1.8	1.8	S355J2		
1087	1	PL10*110	110	1.0	1.0	S355J2		
Mk-010	1	HEAA100	4405	55.0	55.0	S355J2		
WELDS	1%				0.6			
TOTAL					61.5			
Object:						1373 - Mk502		
Customer: "....."						61.5 kg		
Drawn					COLUMN		Stage	MKD
Designed							Page	Pages
Checked							1	1
Approved								