

				Object:	<i>New vehicle preparation hall</i>	1373 - MD	
Drawn				Customer:	"-----"	Stage	<i>MKD</i>
Designed				<i>Mounting plan</i> <i>Title page</i> <i>Isometrik view</i>		Page	Pages
Checked			1			5	
Approved							

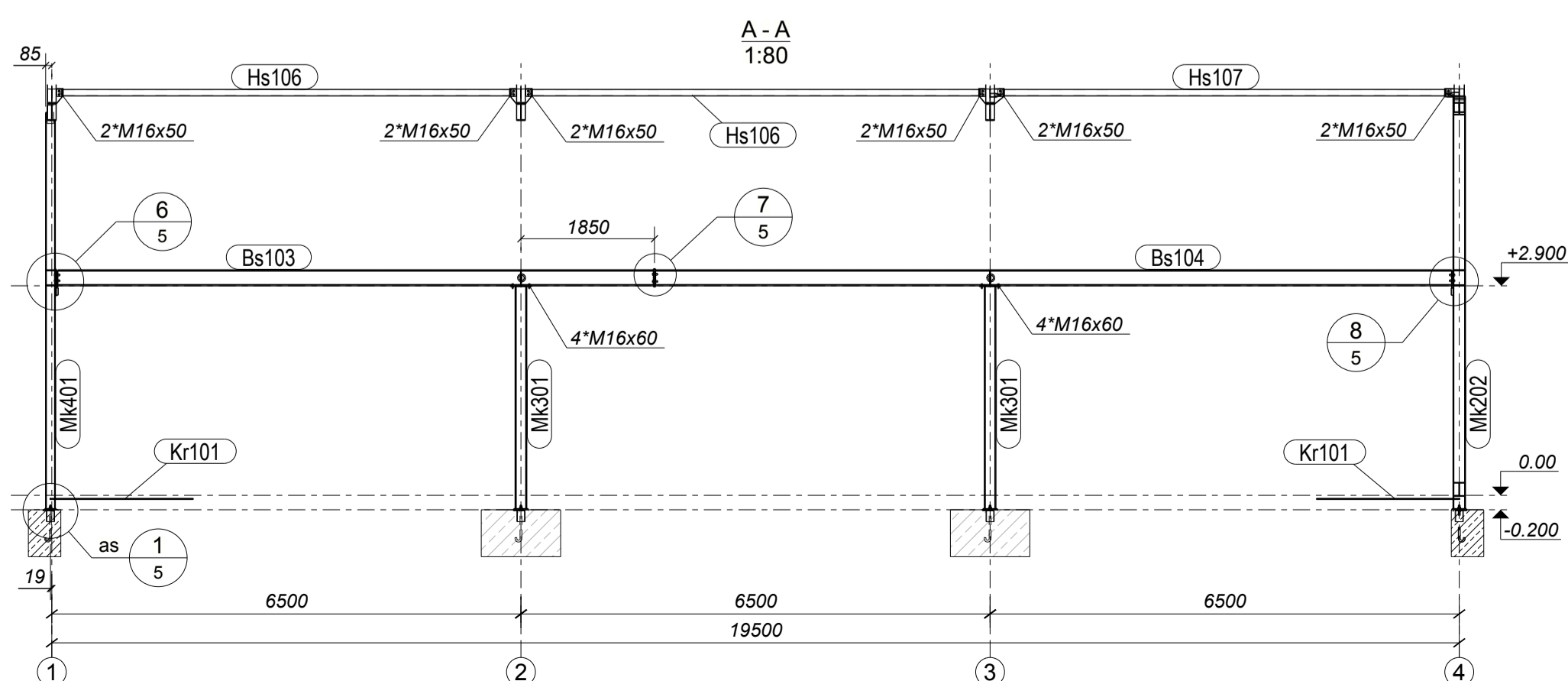
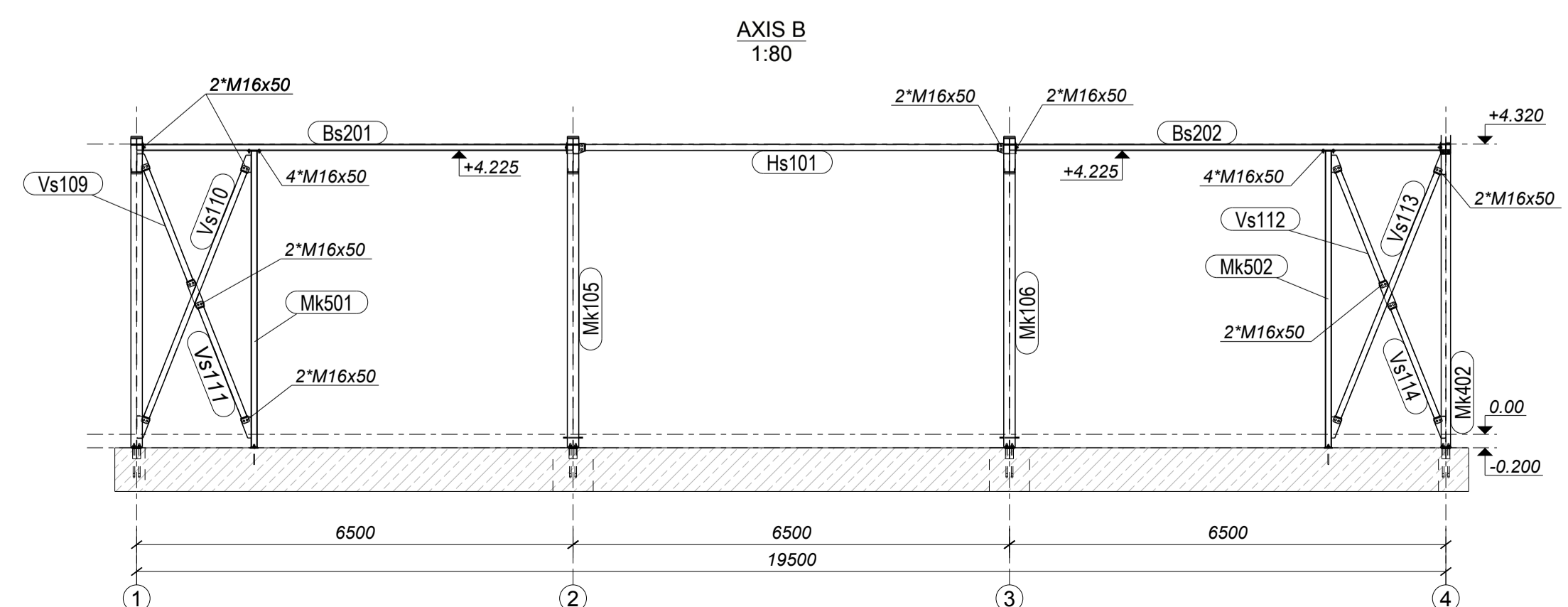
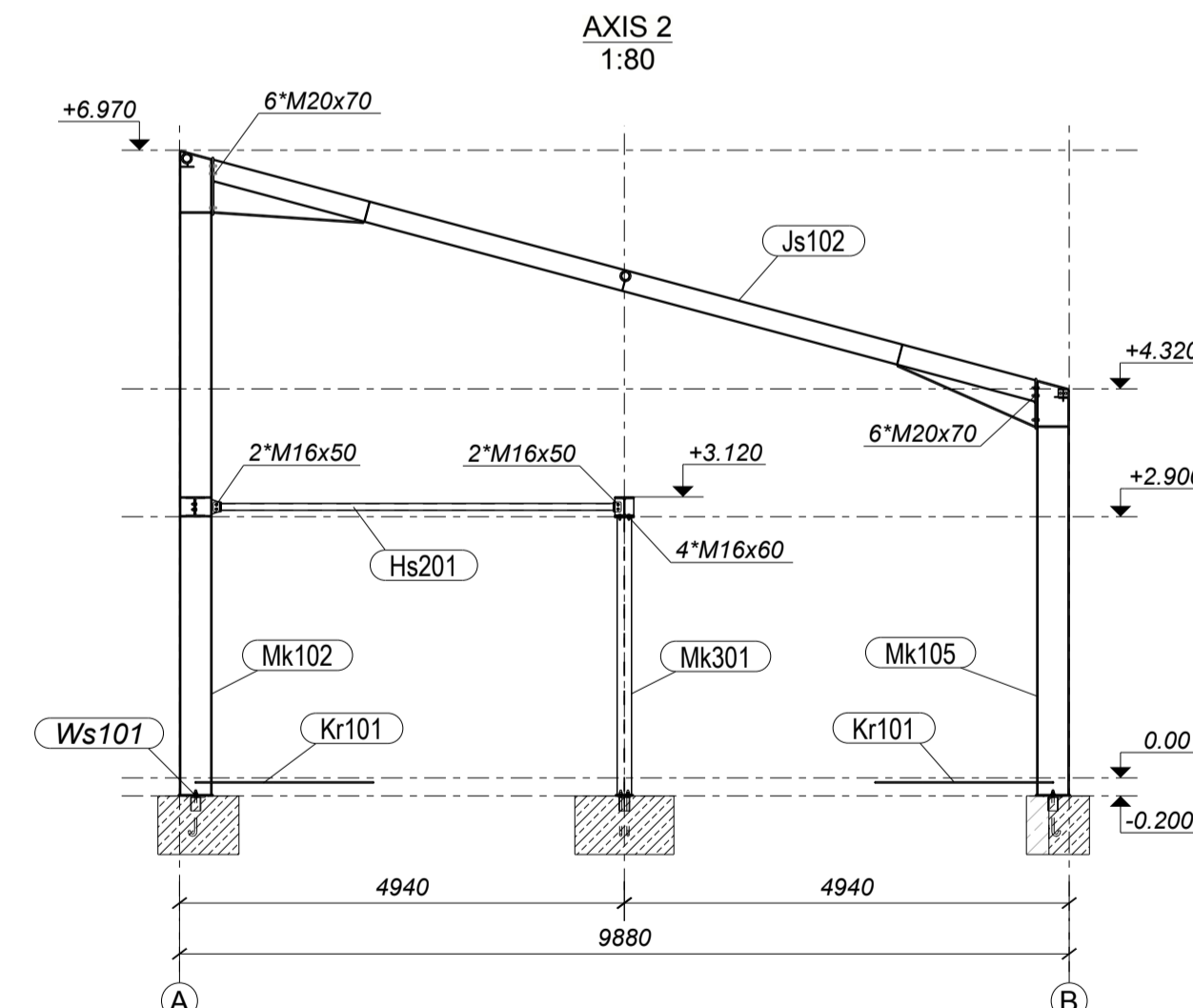
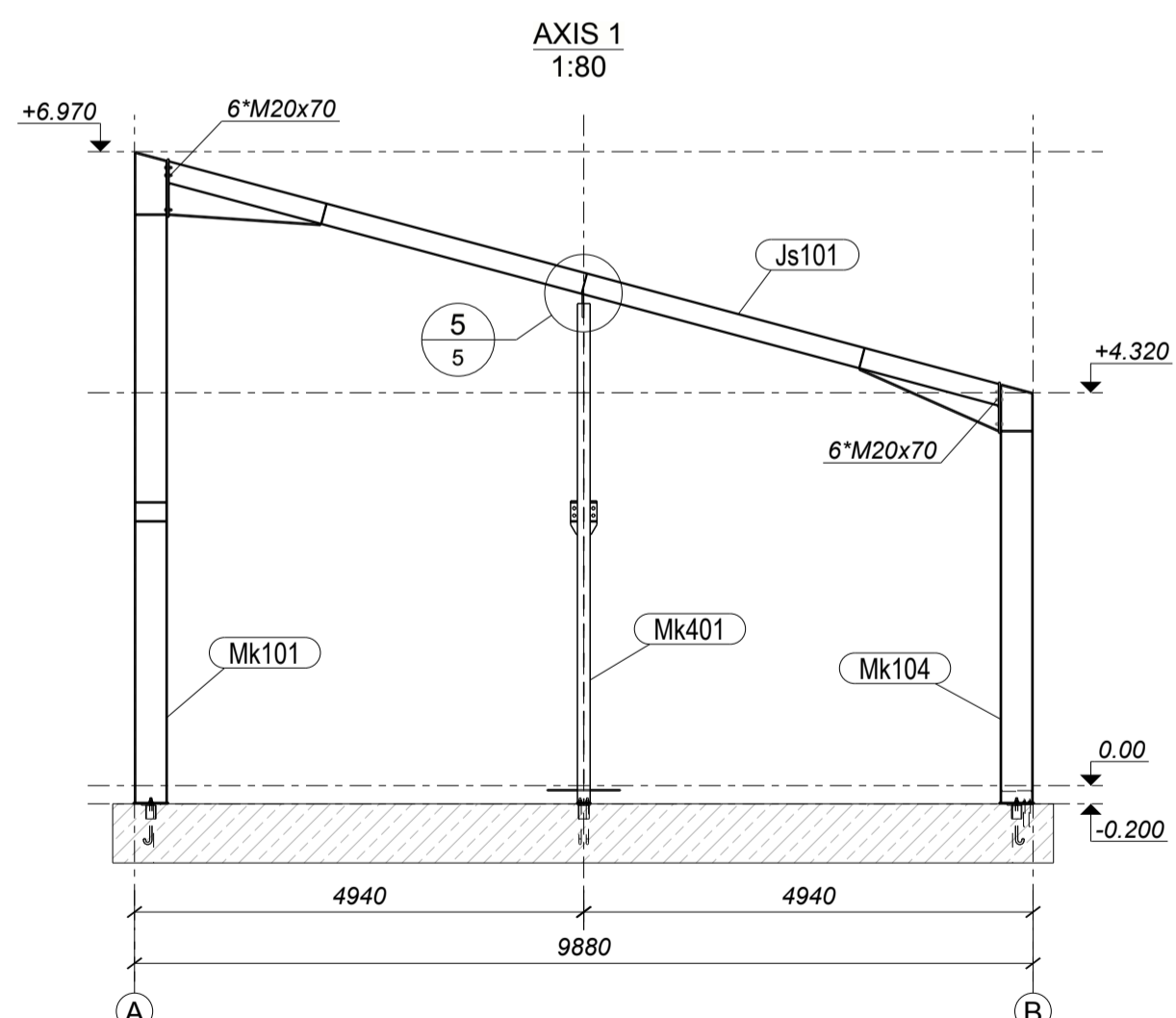
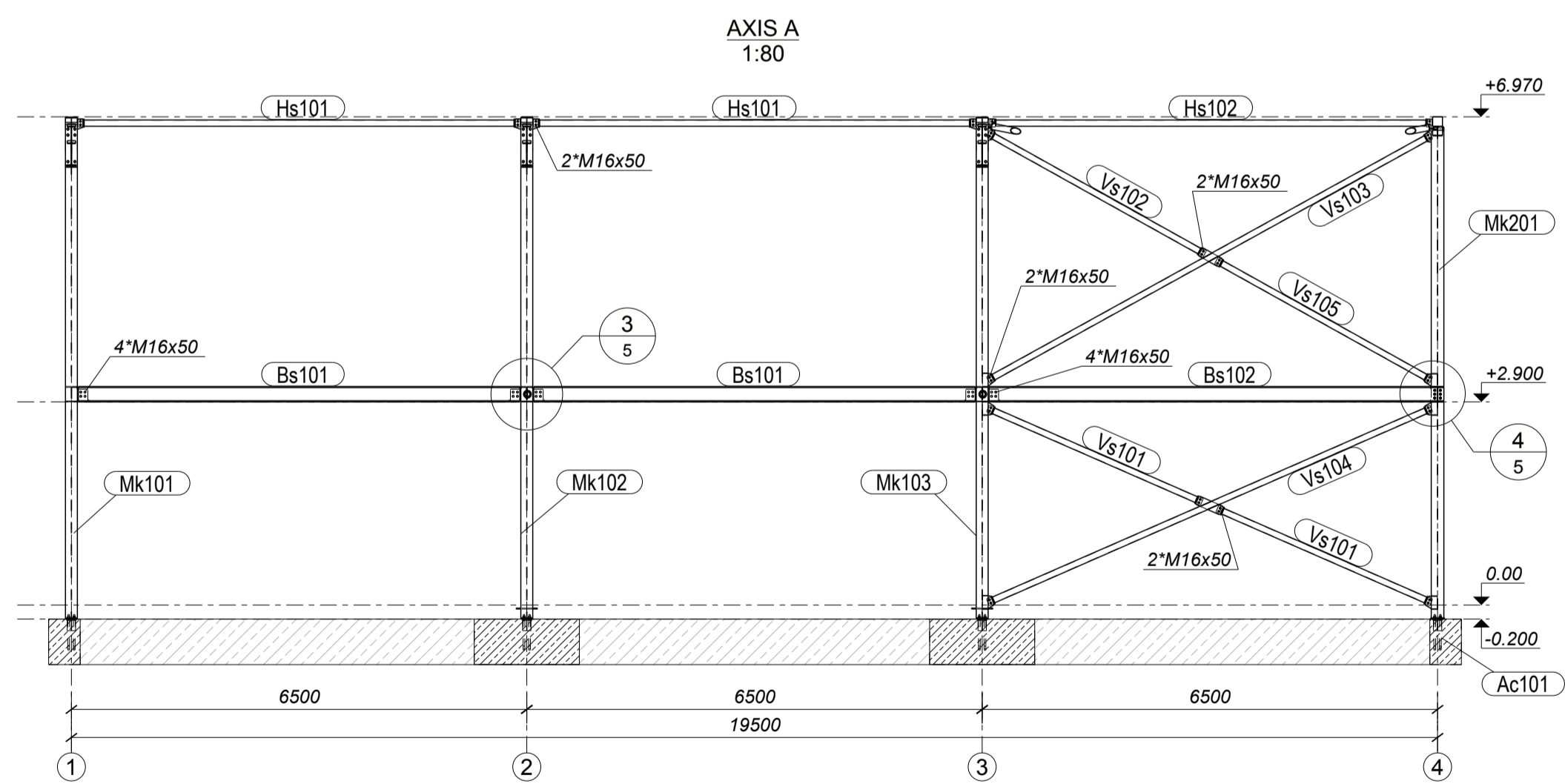
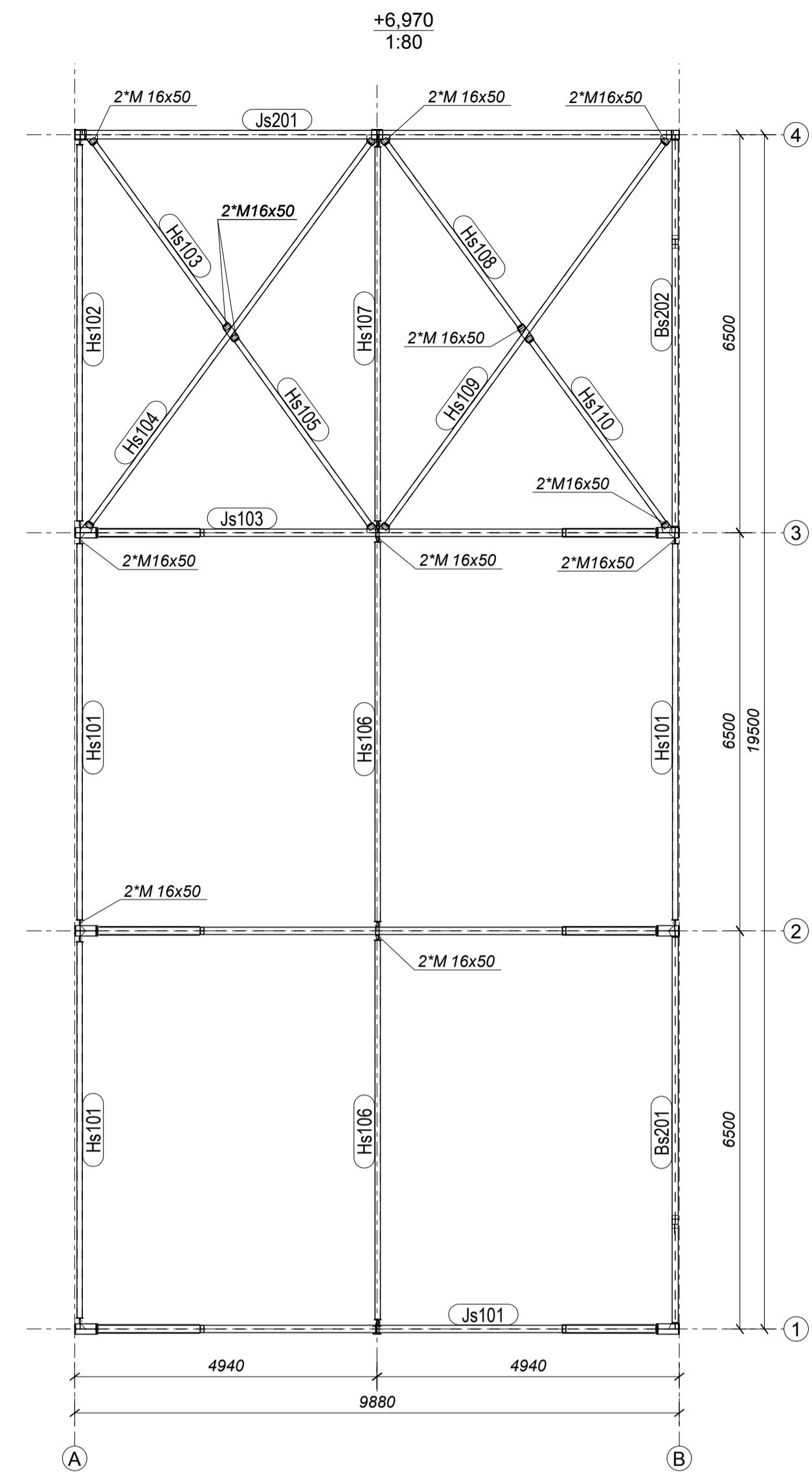
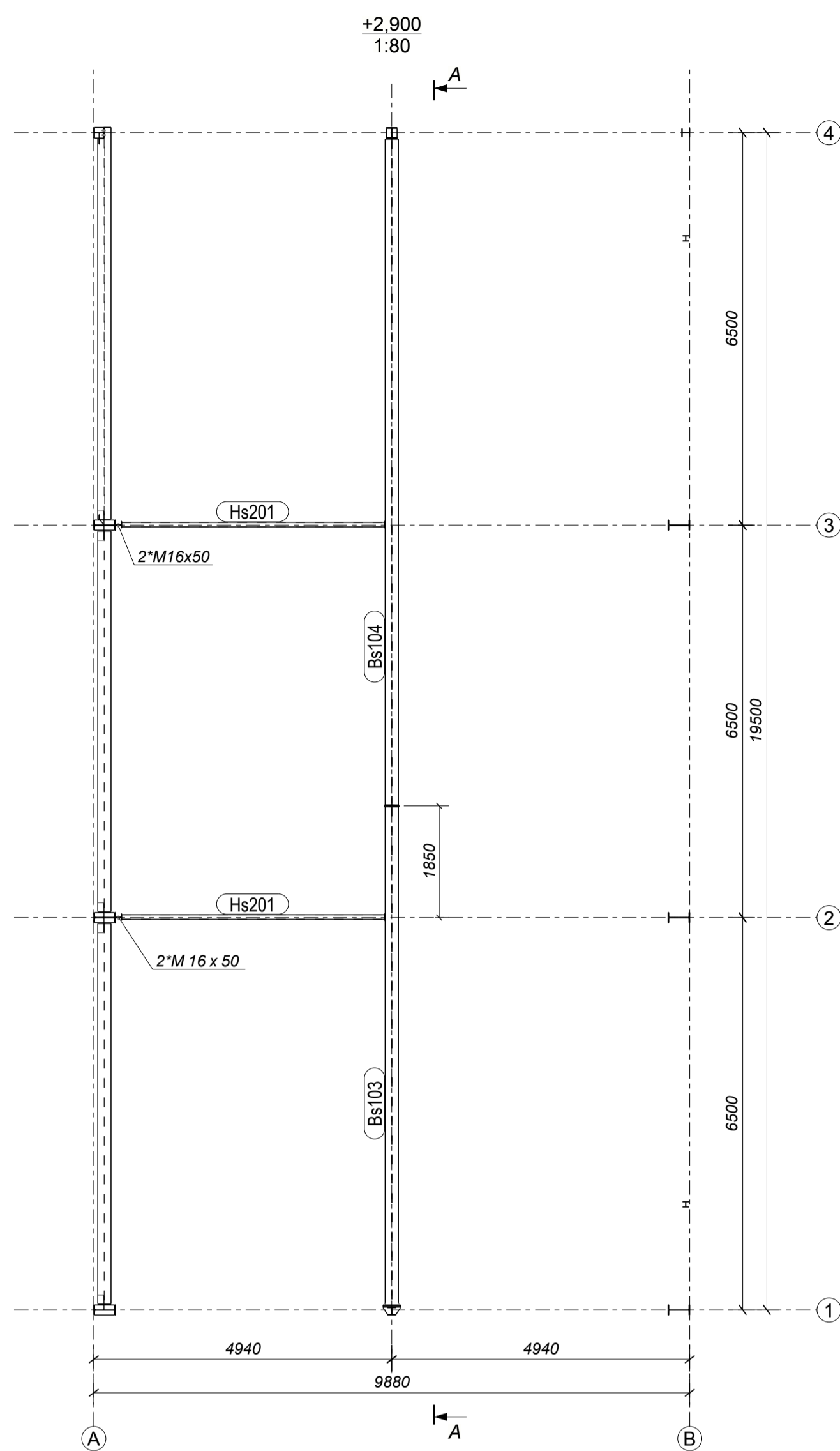
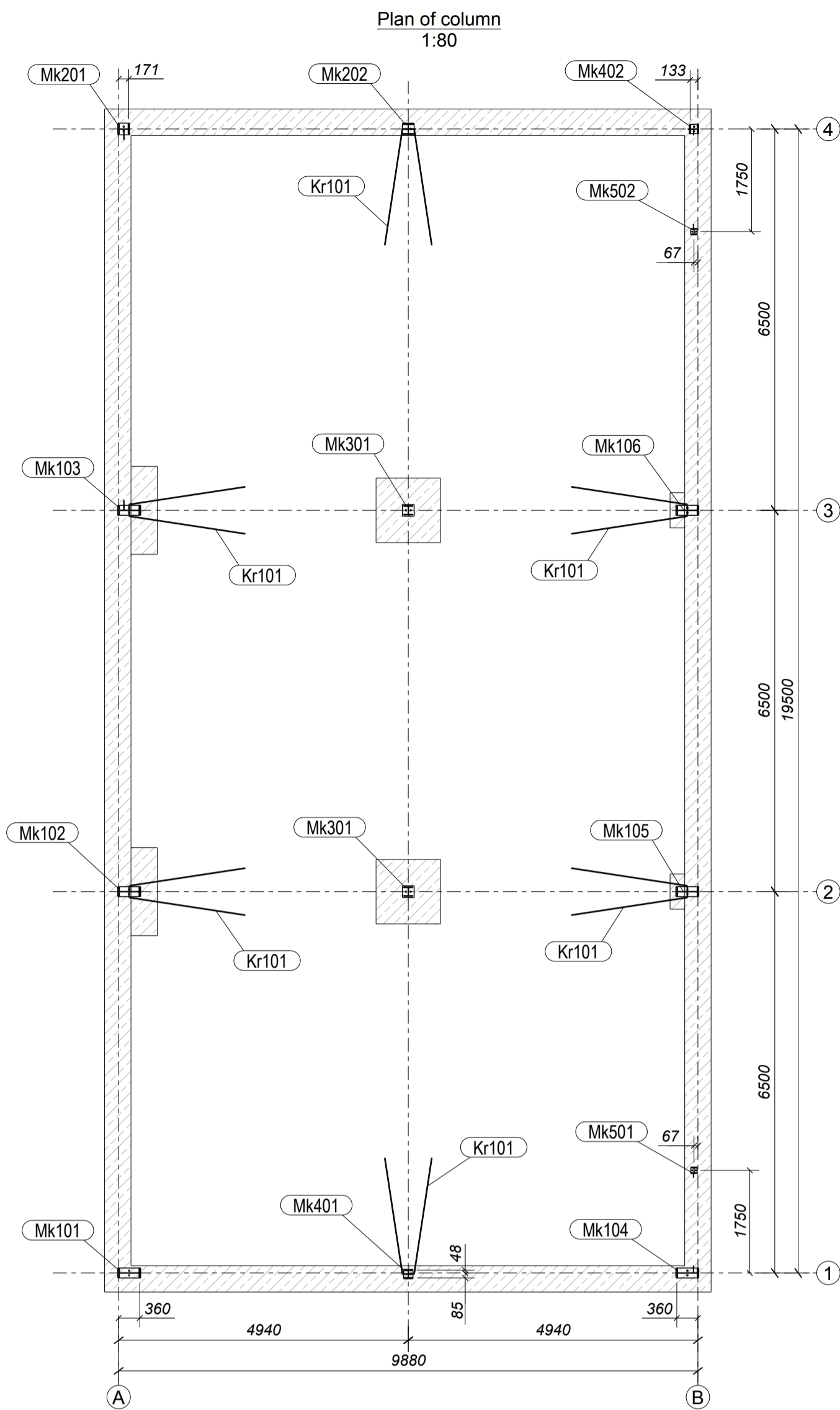
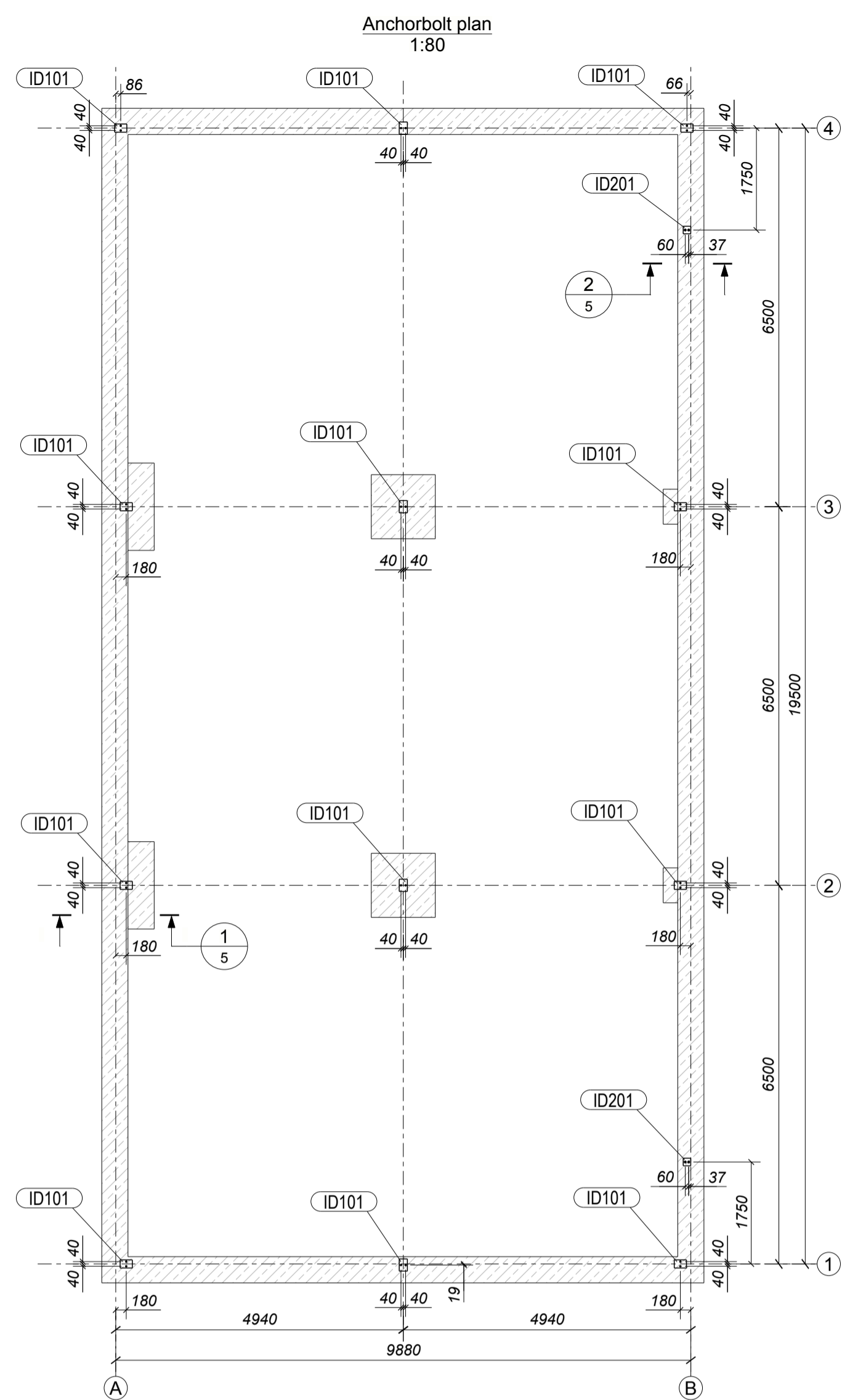
				Object:	<i>New vehicle preparation hall</i>	<i>1373 - MD</i>	
Drawn				Customer:	"-----"		
Designed				<i>Mounting plan</i> <i>Common data</i>		Stage	<i>MKD</i>
Checked						Page	Pages
Approved					2	5	

Assembly list							
Assembly	Assembly name	Quant.	Profile	Length, mm	Area, m2	Weight, kg	Weight total, kg
Ac101	ANCHOR	24	D25	513	0,05	2,1	50,3
Bs101	BEAM	2	HEB220	6302	8	459	918
Bs102	BEAM	1	HEB220	6491	8,28	473,9	473,9
Bs103	BEAM	1	HEB220	8282	10,85	619,5	619,5
Bs104	BEAM	1	HEB220	11060	14,33	818,6	818,6
Bs201	BEAM	1	HEAA100	6310	3,54	80,4	80,4
Bs202	BEAM	1	HEAA100	6325	3,54	80,6	80,6
Gs101	MOUNTING GASKET	1	PL5*210	210	0,12	2,1	2,1
Gs102	MOUNTING GASKET	1	PL5*180	210	0,07	1,2	1,2
Hs101	CONNECTION HORIZONTAL	3	CFCHS88.9X3.2	6312	1,8	44,8	134,5
Hs102	CONNECTION HORIZONTAL	1	CFCHS88.9X3.2	6313	1,8	44,8	44,8
Hs103	CONNECTION HORIZONTAL	1	CFCHS88.9X3.2	3866	1,12	28	28
Hs104	CONNECTION HORIZONTAL	1	CFCHS88.9X3.2	7958	2,34	58,5	58,5
Hs105	CONNECTION HORIZONTAL	1	CFCHS88.9X3.2	3936	1,14	28,5	28,5
Hs106	CONNECTION HORIZONTAL	2	CFCHS88.9X3.2	6364	1,82	45,2	90,4
Hs107	CONNECTION HORIZONTAL	1	CFCHS88.9X3.2	6279	1,79	44,6	44,6
Hs108	CONNECTION HORIZONTAL	1	CFCHS88.9X3.2	3909	1,13	28,3	28,3
Hs109	CONNECTION HORIZONTAL	1	CFCHS88.9X3.2	7962	2,34	58,5	58,5
Hs110	CONNECTION HORIZONTAL	1	CFCHS88.9X3.2	3895	1,13	28,2	28,2
Hs201	CONNECTION HORIZONTAL	2	CFCHS76.1X2.9	4530	1,12	25,5	51,1
ID101	MORTGAGED DETAIL	12	HEA120	165	0,17	6,6	78,8
ID201	MORTGAGED DETAIL	2	PL10*130	130	0,07	2,1	4,3
Js101	ROOF BEAM	1	IPE240	9628	11,55	425,8	425,8
Js102	ROOF BEAM	1	IPE240	9628	11,53	423,9	423,9
Js103	ROOF BEAM	1	IPE240	9628	11,63	427	427
Js201	ROOF BEAM	1	HEA140	10265	8,54	269,2	269,2
Kr101	KERNEL	6	D12	2034	0,15	3,4	20,5
Mk101	COLUMN	1	IPE360	7167	10,49	452,2	452,2
Mk102	COLUMN	1	IPE360	7167	10,67	458,3	458,3
Mk103	COLUMN	1	IPE360	7167	11,08	469,9	469,9
Mk104	COLUMN	1	IPE360	4613	6,98	298,8	298,8
Mk105	COLUMN	1	IPE360	4613	6,77	292,7	292,7
Mk106	COLUMN	1	IPE360	4613	6,82	294,2	294,2
Mk201	COLUMN	1	HEA180	7030	7,83	276,6	276,6
Mk202	COLUMN	1	HEA180	5731	6,45	229,8	229,8
Mk301	COLUMN	2	HEB160	3100	3,06	143,5	287,1
Mk401	COLUMN	1	HEA140	5500	4,8	161	161
Mk402	COLUMN	1	HEA140	4438	3,91	124,5	124,5
Mk501	COLUMN	1	HEAA100	4425	2,65	61,5	61,5
Mk502	COLUMN	1	HEAA100	4425	2,65	61,5	61,5
N101	ANCHOR NUT	24	NUT_M20	22	0	0,1	2,1
N102	ANCHOR NUT	4	NUT_M16	18	0	0	0,2
Vs101	CONNECTION VERTICAL	2	CFCHS88.9X3.2	3333	0,97	24,3	48,6
Vs102	CONNECTION VERTICAL	1	CFCHS88.9X3.2	3538	1,03	25,7	25,7
Vs103	CONNECTION VERTICAL	1	CFCHS88.9X3.2	7221	2,15	53,8	53,8
Vs104	CONNECTION VERTICAL	1	CFCHS88.9X3.2	6906	2,07	52,1	52,1
Vs105	CONNECTION VERTICAL	1	CFCHS88.9X3.2	3507	1,02	25,5	25,5
Vs106	CONNECTION VERTICAL	1	CFCHS88.9X3.2	3918	1,13	28,3	28,3
Vs107	CONNECTION VERTICAL	1	CFCHS88.9X3.2	6204	1,85	46,2	46,2
Vs108	CONNECTION VERTICAL	1	CFCHS88.9X3.2	2964	0,87	21,7	21,7
Vs109	CONNECTION VERTICAL	1	CFCHS88.9X3.2	1942	0,58	14,7	14,7
Vs110	CONNECTION VERTICAL	1	CFCHS88.9X3.2	4105	1,3	32,9	32,9
Vs111	CONNECTION VERTICAL	1	CFCHS88.9X3.2	1928	0,58	14,6	14,6
Vs112	CONNECTION VERTICAL	1	CFCHS88.9X3.2	1933	0,58	14,6	14,6
Vs113	CONNECTION VERTICAL	1	CFCHS88.9X3.2	4089	1,29	32,8	32,8
Vs114	CONNECTION VERTICAL	1	CFCHS88.9X3.2	1919	0,58	14,5	14,5
Ws101	MORTGAGED DETAIL	24	PL6*50	50	0,01	0,1	2,9
Ws102	MORTGAGED DETAIL	4	PL6*40	40	0	0,1	0,3
Total		157			232,76		9 189,5

Profile's material list					
Profile	Steel	Length, mm	Area, m2	Weight, kg	Note
CFCHS76.1X2.9	S355J2	8 708	2,08	46,5	
CFCHS88.9X3.2	S355J2	127 693	35,63	880,6	
D12	S355J2	25 157	0,93	20,5	
D16	S355J2	1 200	0,06	1,7	
D25	S355J2	14 160	1,09	50,3	
HEA120	S355J2	1 800	1,22	36,5	
HEA140	S355J2	20 143	15,99	506,3	
HEA180	S355J2	12 713	13,02	460,2	
HEAA100	S355J2	21 405	11,84	267,1	
HEB160	S355J2	6 150	5,65	266,9	
HEB220	S355J2	38 377	48,74	2795,0	
IPE240	S355J2	28 520	26,30	891,9	
IPE360	S355J2	35 177	47,59	2045,9	
Total			210,12	8269,4	

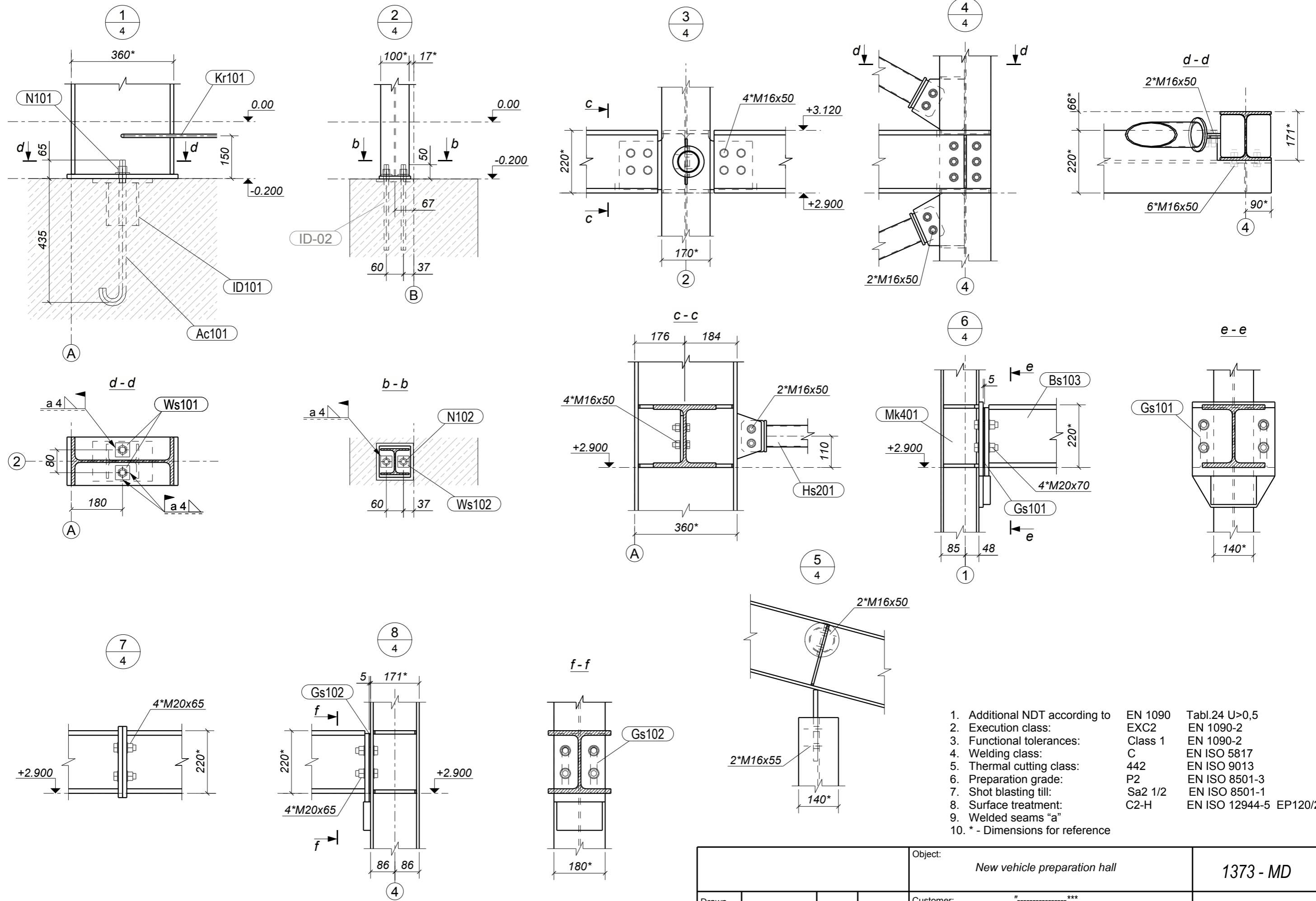
Bolt list							
Name and diameter	Package, mm	Thread, mm	Quant.	Weight, kg	Standard	Grade	Notes
M16*50	16-20	38	174	19,8	4014	8.8	
M16*55	21	38	2	0,2	4014	8.8	
M16*60	26	38	8	1	4014	8.8	
M20*65	30	46	8	1,8	4014	8.8	
M20*70	35	46	4	1	4014	8.8	
M20*70	33	46	36	8,7	4014	10.9	
Total				32,5			
Nut list							
M16			184	6,9	4032	8	
M20			12	0,9	4032	8	
M20			36	2,6	4032	10	
Total				10,3			
Washer list							
M16			368	4,2	7089		
M20			96	1,6	7089		
Total				5,8			

				Object: New vehicle preparation hall	1373 - MD
Drawn				Customer: "*****"	
Designed				<i>Mounting plan</i>	Stage MKD
Checked				<i>Assembly list</i>	Page Pages
Approved				<i>Profile's material list, Bolt list</i>	3 5



1. Additional NDT according to EN 1090 Tabl.24 U>0,5
2. Execution class: EXC2 EN 1090-2
3. Functional tolerances: Class 1 EN 1090-2
4. Welding class: C EN ISO 5817
5. Thermal cutting class: 442 EN ISO 9013
6. Preparation grade: P2 EN ISO 8501-3
7. Shot blasting till: S2 1/2 EN ISO 8501-1
8. Surface treatment: C2-H EN ISO 12944-5 EP120/2
9. Welded seams "a"
10. * - Dimensions for reference

Object:		New vehicle preparation hall		1373 - MD	
Customer:		*****			
Drawn		Mounting plan		Stage	MKD
Checked		General views		Page	Pages
Approved		Section A-A		4	5



1. Additional NDT according to EN 1090 Tabl.24 U>0,5
2. Execution class: EN 1090-2 EXC2
3. Functional tolerances: EN 1090-2 Class 1
4. Welding class: EN ISO 5817 C
5. Thermal cutting class: EN ISO 9013 442
6. Preparation grade: EN ISO 8501-3 P2
7. Shot blasting till: EN ISO 8501-1 Sa2 1/2
8. Surface treatment: EN ISO 12944-5 EP120/2 C2-H
9. Welded seams "a"
10. * - Dimensions for reference

Object:		New vehicle preparation hall		1373 - MD	
Customer:		"....."***			
Drawn		<i>Mounting plan</i> <i>Nodes 1-8</i>		Stage	MKD
Designed				Page	Pages
Checked				5	5
Approved					